

**AGENDA
REGULAR DRAINAGE MEETING
MARCH 28, 2018
8:30 A.M.**

1. Open Meeting
2. Approve Agenda
3. Approve Minutes Of March 7, 2018 Regular Drainage Meeting

Documents:

[3_7_2018 - DRAINAGE MINUTES.PDF](#)

4. DD 1 - Approve Minutes Of March 7, 2018 Completion Hearing

Documents:

[DD 1 COMPLETION HRG 3_7_2018 - MINUTES.PDF](#)

5. DD 1 - Approve Minutes Of March 7, 2018 Reclassification Hearing

Documents:

[DD 1 RECLASSIFICATION HRG 3_7_2018 - MINUTES.PDF](#)

6. DD 72 - Approve Minutes Of March 7, 2018 Reclassification Hearing

Documents:

[DD 72 RECLASS HRG 3_7_2018 - MINUTES.PDF](#)

7. Approve Claims For Payment
Pay Date of Tuesday, March 20, 2018

Documents:

[20180320 DRAINAGE PUBLICATION LIST.PDF](#)

8. DD 72 - Discuss, With Possible Action, Contractor Updates
9. DD 72 - Discuss, With Possible Action, Contractor Request For Extension Of Time
10. DD 72 - Approve Change Order #2

Documents:

[DD 72 CHANGE ORDER 2.PDF](#)

11. DD 72 - Approve Change Order #3

Documents:

[DD 72 UNSIGNED CHANGE ORDER 3.PDF](#)

12. DD 1 - Discuss, With Possible Action, Reclassification Updates

Documents:

[DD 1 REVISED RECLASSIFICATION 2018.PDF](#)

13. DD 1 - Approve Work Order Request #205

Documents:

[WORK ORDER 205 REQUEST FORM.PDF](#)

14. DD 41 - Discuss, With Possible Action, Landowner Meeting

15. DD 55-3 Lat 9 - Discuss, With Possible Action, Waterway Seeding

Documents:

[DD 55-3 LAT 9 WATERWAY SEEDING.PDF](#)

16. DD 102 - Discuss, With Possible Action, Current Project And Wetland

Documents:

[DD 102 WETLAND PROJECT IOWA CODE SECTION 468.188.PDF](#)

17. DD 22 - Discuss, With Possible Action, Engineer's Add-On Options

Documents:

[DD 22 UPDATE ON OPTIONS REDUCED.PDF](#)

18. Other Business

19. Adjourn Meeting

REGULAR DRAINAGE MEETING

3/7/2018 - Minutes

1. Open Meeting
Hardin County Board of Supervisors Chairman, BJ Hoffman, opened the meeting. Also present were Hardin County Supervisors, Lance Granzow and Renee McClellan; Lee Gallentine with Clapsaddle-Garber Associates (CGA); Drainage Clerk, Tina Schlemme.
2. Approve Agenda
Granzow moved, McClellan seconded to approve the agenda as presented. All ayes. Motion carried.
3. Approve Minutes
Granzow moved, McClellan seconded to approve the minutes of the February 14, 2018 regular drainage meeting. All ayes. Motion carried.
4. Approve Minutes
DD 98 - Granzow moved, McClellan seconded to approve the minutes of the February 14, 2018 public hearing. All ayes. Motion carried.
5. Approve Minutes
DD 143 - Granzow moved, McClellan seconded to approve the minutes of the February 14, 2018 public hearing. All ayes. Motion carried.
6. DD 22 - Approve Minutes Of March 2, 2018 Landowner Meeting
Granzow moved, McClellan seconded to approve the minutes of the March 2, 2018 landowner meeting. All ayes. Motion carried.
7. DD 34 - Discuss, With Possible Action, Culvert Installation
Gallentine stated any concerns he had with the culvert installation were resolved after speaking with County Engineer, Taylor Roll. No action needed.
8. DD 98 - Discuss, With Possible Action, Petition Filed
McClellan moved, Granzow seconded to reject the submitted petition with signatures due to the petition not stating what it was for. Schlemme is to inform Hadwiger. All ayes. Motion carried.
9. DD Big 4, 41, 77, 123, 128 & 143 - Acknowledge Receipt Of Plans & Specifications And Set Bid Letting Date
Granzow moved, McClellan seconded to acknowledge receipt of the Engineers Plans & Specifications and to set the bid letting date as Wednesday, March 28, 2018 at 9:00 a.m. in the large conference room of the Hardin County Courthouse. All ayes. Motion carried.
10. DD 25 - Discuss, With Possible Action, Updates On Project
Gallentine updated the Trustees that the project would be changing from concrete to steel restrained joints.
11. DD 56 - Discuss, With Possible Action, Improvement Request
Schlemme updated the Trustees that an improvement request had been submitted. Landowner, Lynn Holechek, has asked for better drainage by upsizing his tile or cutting off the west portion of the district and draining north to DD 26 open ditch. Granzow moved, McClellan seconded to hold a meeting with landowners on Wednesday, March 28, 2017 at 10:00 a.m. in the large conference room of the Hardin County Courthouse. All ayes. Motion carried.
12. DD 86 - Discuss, With Possible Action, Repair Summary For Work Order #172
Gallentine presented the repair summary for Work Order #172 which stated a spot repair was needed for partially collapsed tile near Georgetown Road and an intrusive private tile connection. McClellan moved, Granzow seconded to repair both the collapsed tile and the intrusive private tile using the county lottery system. All ayes. Motion carried.
13. Other Business
14. Adjourn Meeting
McClellan moved, Granzow seconded to adjourn the meeting. All ayes. Motion carried.

**PUBLIC HEARING ON COMPLETION OF CONTRACT
ON REPAIRS TO MAIN TILE, OUTLET, AND WATERWAY
MAIN TILE OF DRAINAGE DISTRICT 1, HARDIN COUNTY**

3/7/2018 - Minutes

1. Open Meeting
Hardin County Board of Supervisors Chairman, BJ Hoffman, opened the meeting. Also present were Hardin County Supervisors, Lance Granzow and Renee McClellan; Landowners, Lora Kramer, Marvin Kramer, Jerry Kramer, Arnie Luiken, Michael Roll, Brent Perry, Steve Perry, Charles Butler, Sandy Trampe and Bill Trampe; Lee Gallentine with Clapsaddle-Garber Associates (CGA); Drainage Clerk, Tina Schlemme.
2. Approve Agenda
McClellan moved, Granzow seconded to approve the agenda as presented. All ayes. Motion carried.
3. Introductions/Attendance
Introductions were made and attendance verified.
4. Open Public Hearing
Hoffman opened the public hearing.
5. Verify Publication
The notice of publication was verified as being published in the Eldora Herald Index on February 13, 2018.
6. Explanation Of Project

The meeting was turned over to Gallentine who explained the project. After reports concerning repairs and improvements, an Engineer's Report was completed dated August 9, 2016. At the public hearing on the Engineer's Report, the Trustees authorized to proceed with project plans and specifications for repairs. A bid letting was held on March 29, 2017 in which 2 bids for polypropylene were received. Gehrke, Inc. was the lowest responsible bidder in the amount of \$149,749 and a contract was signed on April 27, 2017. Construction began September 12, 2017 and was completed on November 10, 2017 (approximately 2 weeks before the November 30, 2017 contract completion date).

Gallentine further explained the deviations that occurred during construction.

1. It was discovered that galvanized CMP was used at the main tile outlet instead of aluminized CMP as specified in the plans and specifications, which resulted in a decrease of \$200.
2. It was discovered that more spot repairs were needed to be performed and an intake removed and replaced. This resulted in an increase of \$18,073.75.
3. Additional lengths of existing tile were removed in order to perform the additional spot repairs, which resulted in an increase of \$905.
4. Additional private tile connections were encountered during spot repairs than planned, which resulted in an increase of \$600.
5. A reduced amount of televising was performed, which resulted in a decrease of \$20.
6. It was determined that traffic control was not needed as no repairs were performed in the right of way, which decreased the project by \$500.
7. It was determined that the open ditch construction and seeding were extended 100' upstream to allow for a smoother transition with the existing ground. This resulted in an increase of \$4,100.
8. It was determined that the waterway cleanout and seeding was extended 100' to allow for a smoother transition with the existing ground, which increased the project by \$1,195.

Gallentine estimated the final project costs to be \$206,038.80, which is approximately \$57,000 above those presented at the hearing. This amount does not include any interest, administrative fees or legal costs incurred or any work or televising performed prior to the beginning of the contracted project.

7. Written Or Verbal Comments/Discussion

It was discussed that the seeding warranty is for one (1) year and covers if it never grows. It doesn't cover it grows and then dies. The construction warranty was also discussed as being for two (2) years from the completion hearing date. Landowners agreed that they would walk the area to review for any items needing covered under the construction warranty.

Schlemme presented the costs of the project and the current negative balance needing to be assessed in 2018 to landowners.

Landowners stated that the waterway further downstream should have been cleaned out as part of this project as it affects drainage. The Trustees agreed that this would be considered a new project and could be looked at moving forward.

8. Damage Claims

No damage claims were submitted.

9. Close Public Hearing

Granzow moved, McClellan seconded to close the public hearing. All ayes. Motion carried.

10. Possible Action

Granzow moved, McClellan seconded to approve the completion of the the project. All ayes. Motion carried.

McClellan moved, Granzow seconded to approve the final pay estimate in the amount of \$17,390.27 to Gehrke, Inc. All ayes. Motion carried.

11. Other Business

The Trustees agreed that a new work order request for a further cleanout of the waterway, as requested by Marvin Kramer, should be created for approval at the next regular drainage meeting.

12. Adjourn Meeting

Granzow moved, McClellan seconded to adjourn the meeting. All ayes. Motion carried.

**PUBLIC HEARING ON RECLASSIFICATION COMMISSION REPORT
FOR MAIN OF DRAINAGE DISTRICT 1, HARDIN COUNTY**

3/7/2018 - Minutes

1. Open Meeting

Hardin County Board of Supervisor Chairman, BJ Hoffman, opened the meeting. Also present were Hardin County Supervisors, Lance Granzow and Renee McClellan; Landowners, Lora Kramer, Marvin Kramer, Jerry Kramer, Arnie Luiken, Michael Roll, Brent Perry, Steve Perry, Charles Butler, Sandy Trampe and Bill Trampe; Lee Gallentine with Clapsaddle-Garber Associates (CGA); Drainage Clerk, Tina Schlemme.

2. Approve Agenda

McClellan moved, Granzow seconded to approve the agenda as presented. All ayes. Motion carried.

3. Introductions/Attendance

Introductions were made and attendance verified.

4. Open Public Hearing

Hoffman opened the public hearing.

5. Verify Publication

The notice of publication was verified as being published in the Eldora Herald Index on February 13, 2018.

6. Explanation Of Reclassification

The hearing was turned over to Gallentine who explained the reclassification process and methods used. He further explained that the majority of parcels used the methods discussed, but the roadways used an average combined factor due to their irregular shape.

7. Written Or Verbal Comments/Discussion

Schlemme stated there were a few written objections.

1. Marvin Kramer, Mildred Kramer and Gail Lawler submitted objections due to several reasons. Marvin Kramer stated that soil maps show most of the soil in the county is similar and the classification soil factor should not be considered. He would like to see the classification on just proximity determination. It was discussed that a postcard could be mailed to landowners asking whether they would like proximity only or the current proximity with soil factors. The Trustees later agreed that they would not move forward with the landowner ballot but it was okay for Gallentine to share with landowners the classification calculation report displaying all factors. Marvin Kramer also stated that historical documents show Lawler land in the NW SE of section 25 should not be assessed anything, but the current and new classification show an amount. The Trustees agreed that this should be investigated.

2. LaVerne Gast submitted an objection due to a portion of his land being in both DD 1 and DD 8 and flowing into DD 8. Gallentine agreed the overlap of the two districts should be revised.

3. Michael Roll submitted an objection due to his land being adversely affected when Highway 20 was installed. The Trustees agreed that they have heard this argument throughout all the districts affected by the new highway and their percent of benefit should be higher.

8. Close Public Hearing

Granzow moved, McClellan seconded to close the public hearing. All ayes. Motion carried.

9. Possible Action

Granzow moved, McClellan seconded to not accept the reclassification report and send back to the commission for the DD 1 and DD 8 boundaries to be re-examined.

Hoffman exited the meeting at 1:30.

Granzow moved, McClellan seconded for the commission to set the assessment for the Iowa Department of Transportation at the 100 percent of benefit amount for Highway 20. All ayes. Motion carried.

Granzow moved, McClellan seconded for CGA to conduct a field investigation for the Lawler tract #49. All ayes. Motion carried.

10. Other Business
None.

11. Adjourn Meeting
Granzow moved, McClellan seconded to adjourn the meeting. All ayes. Motion carried.

**PUBLIC HEARING ON RECLASSIFICATION COMMISSION REPORT
FOR MAIN OF DRAINAGE DISTRICT 72, HARDIN COUNTY**

3/7/2018 - Minutes

1. Open Meeting

Hardin County Board of Supervisors Chairman, BJ Hoffman, opened the meeting. Also present were Hardin County Supervisors, Lance Granzow and Renee McClellan; Landowners, Maurice Ruddick, Jean Granger, Wayne Wilson, Orren Wilson, Brent Perry, Steve Perry and George Cummins; Matt DeSchamp with M & D Construction and his attorney, Mike Marquess; Lee Gallentine with Clapsaddle-Garber Associates (CGA); Drainage Clerk, Tina Schlemme.

2. Approve Agenda

McClellan moved, Granzow seconded to approve the agenda as presented. All ayes. Motion carried.

3. Introductions/Attendance

Introductions were made and attendance verified.

4. Discuss, With Possible Action, Change Order Request

Gallentine distributed facts pertaining to a change order request that had been submitted by DeSchamp.

1. Contractor bid a price of \$52 per foot for 24" pipe with rock bedding below pipe and rock backfill on sides of pipe for width of the trench.

2. The bid documents required the contractor to determine anything that would affect cost, progress, performance, means, methods and procedures of construction; visit the site; and that by submitting a bid, no further examinations, investigations, explorations, or tests were needed.

3. The soil type shown on the Hardin County GIS site and USDA soil surveys (on-line and paper) indicate that 5 out of 16 soil types making up 1/2 of the area east of the gravel road have sand within 80" of the ground surface.

4. After the contractor encountered sand, he requested an additional \$25 per foot due to additional rock beside the pipe in a wider trench, slower work rate and 2" to 3" of rock over the pipe.

5. Gallentine requested rock tickets, production rates or other pertinent information to verify the claim for additional payment, but the contractor never submitted this information.

6. Instead of stopping for an evaluation of the change order as required by the project documents, the contractor continued to work and eventually ran out of sand (1,000 feet total).

7. Contractor is still requesting the additional \$25 per foot.

DeSchamp explained that they have a plan moving forward if they encounter sand again, but would like to reach a deal with landowners for the extra materials used. It was calculated that the approximate amount requested is \$25,000. DeSchamp stated he would take \$10,000. The Trustees asked for a show of hands from landowners willing to pay the additional \$10,000 and all but one raised their hand. It was discussed that Gallentine will produce the change order and then obtain signatures for a formal approval.

DeSchamp stated he had asked for solid lids versus grated lids on intakes. The landowners stated they would like to bury them so they do not impact farming. DeSchamp believed this would reduce the cost. It was discussed that two have already been installed, so this method will be used for the remaining three.

Landowners stated they would like the lower 200' of the existing tile to be televised that was not a part of the original plan. The Trustees agreed this should be done when the televising crew comes back out to televise the remainder of the project area west of the road.

5. Open Public Hearing

Hoffman opened the public hearing.

6. Verify Publication

The notice of publication was verified as being published in the Eldora Herald Index on February 13, 2018.

7. Explanation Of Reclassification

The hearing was turned over to Gallentine who explained the reclassification process and methods used. He further explained that the majority of parcels used the methods discussed, but the roadways used an average combined factor due to their irregular shape. Another exception explained was for tract numbers 25, 26, 27, 36, 37, 38 and 39 in which private tile was installed to direct drainage outside of district boundaries. The commissioners agreed that this was the landowners choice, therefore classified them the same as all other tracts.

8. Written Or Verbal Comments/Discussion

Landowners voiced concerns regarding the tile at the east end of the district being affected by the increased water capacity at the west end. It was discussed that a restrictor may need to be installed to help reduce that flow, but will be reviewed again if/when the time is needed.

Landowners requested a 20 year waiver payment plan because this is a larger project. The Trustees agreed that they will do 20 years when the district is assessed.

9. Close Public Hearing

Granzow moved, McClellan seconded to close the public hearing. All ayes. Motion carried.

10. Possible Action

McClellan moved, Granzow seconded to approve the ReClassification Commission Report for all current and future repairs and improvements to the Main. All ayes. Motion carried.

11. Other Business

DD 102 - Steve Perry explained that his wetland program project continues to move forward. The engineer's process will start within a month and they should have a larger picture by summer.

12. Adjourn Meeting

McClellan moved, Granzow seconded to adjourn the meeting. All ayes. Motion carried.



Hardin County

Drainage Publication Notice Tuesday, March 20, 2018

Description	Vendor Name	Amount
DD 1 Completion Hearing Notice WO 92	Mid-America Publishing Corp	33.53
DD 1 Final Pay Estimate 3 WO 92	Gehrke	17,390.27
DD 1 Reclass Hrg Notice WO 92	Mid-America Publishing Corp	234.05
DD 110 Election Notice	South Hardin Signal Review	4.83
DD 123 Plans & Specs 1/31-3/2 WO 188	Clapsaddle-Garber Assoc	1,267.96
DD 128 Plans & Specs 10/1-17 - 3/2/18 WO 127	Clapsaddle-Garber Assoc	3,184.16
DD 130 Election Notice	Times Citizen	5.61
DD 143 Comp Eng Svcs 1/31-2/23 WO 59	Clapsaddle-Garber Assoc	321.50
DD 143 Final Pay Estimate WO 59	McDowell & Sons Contractors	22,496.16
DD 143 Plans & Specs 10/1/17 - 3/2/18 WO 167	Clapsaddle-Garber Assoc	2,773.85
DD 16 ELECTION NOTICE	Times Citizen	5.61
DD 18 ELECTION NOTICE	Times Citizen	5.61
DD 22 CCTV 3509' WO 192	Williams Excavation LLC	5,812.80
DD 22 Eng Svcs Repair Old Tile 1/31-3/2 WO 192	Clapsaddle-Garber Assoc	1,562.00
DD 22 SVCS 1/20-2/17 WO 176	Clapsaddle-Garber Assoc	913.00
DD 25 Lat 3 Contract Admin 1/31-3/2 WO 1	Clapsaddle-Garber Assoc	1,059.60
DD 3 ELECTION NOTICE	Times Citizen	5.61
DD 39 ELECTION NOTICE	Times Citizen	5.61
DD 4 ELECTION NOTICE	Times Citizen	5.61
DD 41 Plans & Specs 1/31- 3/2 WO 194	Clapsaddle-Garber Assoc	1,542.86
DD 45 ELECTION NOTICE	South Hardin Signal Review	4.83
DD 55-1 ELECTION NOTICE	South Hardin Signal Review	4.83
DD 55-2 ELECTION NOTICE	South Hardin Signal Review	4.83
DD 72 Contract Admin 1/31-3/2/18 WO 71	Clapsaddle-Garber Assoc	403.00
DD 72 Reclass Hrg Notice WO 71	Mid-America Publishing Corp	176.70
DD 76 ELECTION NOTICE	Times Citizen	5.61
DD 77 Eng Svcs plans & Specs 1/31-3/2 WO 193	Clapsaddle-Garber Assoc	986.96
DD 78 Crop Damage Claim WO 78	Bob McCollom	1,212.29
DD 86 eng Svcs Repair 1/31-3/2/18 WO 172	Clapsaddle-Garber Assoc	286.20
DD 98 Compl Hrg Notice WO 21	Times Citizen	37.72
DD 98 Svcs 1/3-2/23 WO 21	Clapsaddle-Garber Assoc	271.50
DD Big 4 Main Eng Svcs 10/1/17 - 3/2/18 WO 84	Clapsaddle-Garber Assoc	359.25
DD Jt Big 4 Main Svcs 10/1/17 - 3/2/18 WO190	Clapsaddle-Garber Assoc	1,725.65
DD98 Final Pay Estimate WO21	Hands On Excavating LLC.	5,509.26

Change Order

No. 2

Date of Issuance: March 7, 2018

Effective Date: March 7, 2018

Project: Improvements to Main Tile Drainage District #72	Owner: Trustees of Drainage District #72	Owner's Contract No.:
Contract:		Date of Contract: September 8, 2017
Contractor: M D Construction Inc.		Engineer's Project No.:6833

The Contract Documents are modified as follows upon execution of this Change Order:

Description: During construction, the contractor encountered sand and requested payment for additional rock bedding and slower construction rates. At a meeting held on 3-7-2018, the contractor and landowners present agreed to a lump ppsum amount of \$10,000 for these items for the entire project.

Attachments (list documents supporting change):

CHANGE IN CONTRACT PRICE:

CHANGE IN CONTRACT TIMES:

Original Contract Price:

Original Contract Times:

Calendar days

\$362,801.50

Substantial completion(date): 4-1-2018

Decrease from previously approved Change Orders No. 1 to No. 1:

[Increase] [Decrease] from previously approved Change Orders No. 1 to No. 1:

\$ 2,875.00

Substantial completion (days): 0

Contract Price prior to this Change Order:

Contract Times prior to this Change Order:

\$359,926.50

Substantial completion(date): 4-1-2018

Increase of this Change Order:

Increase of this Change Order:

\$ 10,000.00

Substantial completion (days): 0

Contract Price incorporating this Change Order:

Contract Times with all approved Change Orders:

\$369,926.50

Substantial completion(date): 4-1-2018

RECOMMENDED:

ACCEPTED:

ACCEPTED:

By: _____
Engineer (Authorized Signature)

By: _____
Owner (Authorized Signature)

By: Matt Rupp President
Contractor (Authorized Signature)

Date: _____

Date: _____

Date: 3-8-2018

Approved by Funding Agency (if applicable):

Date: _____

Change Order

No. 3

Date of Issuance: March 21, 2018

Effective Date: March 7, 2018

Project: Improvements to Main Tile Drainage District #72	Owner: Trustees of Drainage District #72	Owner's Contract No.:
Contract:		Date of Contract: September 8, 2017
Contractor: M D Construction Inc.		Engineer's Project No.:6833

The Contract Documents are modified as follows upon execution of this Change Order:

Description: At a meeting held on 3-7-2018, the landowners present requested that all Mandrel and CCTV Access Points (bid item 225) be buried at least 2 feet below ground surface.

Attachments (list documents supporting change):

E-mail from Contract with Change Order pricing.

CHANGE IN CONTRACT PRICE:

CHANGE IN CONTRACT TIMES:

Original Contract Price:

Original Contract Times:

Calendar days

\$362,801.50

Substantial completion(date): 4-1-2018

Increase from previously approved Change Orders
No. 1 to No. 2:

[Increase] [Decrease] from previously approved Change Orders
No. 1 to No. 2:

\$ 7,125.00

Substantial completion (days): 0

Contract Price prior to this Change Order:

Contract Times prior to this Change Order:

\$369,926.50

Substantial completion(date): 4-1-2018

Increase of this Change Order:

Increase of this Change Order:

\$ 7,175.00

Substantial completion (days): 0

Contract Price incorporating this Change Order:

Contract Times with all approved Change Orders:

\$377,101.50

Substantial completion(date): 4-1-2018

RECOMMENDED:

ACCEPTED:

ACCEPTED:

By: _____
Engineer (Authorized Signature)

By: _____
Owner (Authorized Signature)

By: _____
Contractor (Authorized Signature)

Date: _____

Date: _____

Date: _____

Approved by Funding Agency (if applicable):

Date: _____

Lee Gallentine

From: Matt DeSchamp <mattdeschamp@yahoo.com>
Sent: Friday, March 16, 2018 5:33 AM
To: Lee Gallentine; Tina Schlemme Work; Mike Marquess; BJ Hoffman; Lance A. Granzow; Reneè L. McClellan
Subject: Mandrel changes Bid item 225

Lee
As requested by the farmers/Owners on DD 72 project to lower the mandrels test ports to 24" below grade or greater. To make lids fit better on top of these the 36" concrete risers should not be cut other than the one installed already. This is why the depths to the surface may vary.
As stated by one of the owners they are marked GPS by CGA observer so this should not affect finding them in the future as needed.

Per Mandrel test 5 point total this change order includes:
Installing 5 Solid Lids
Installing Black Jack around lid rings
Altering the two structures that were installed previously
(There is one that will have to be cut that was also installed previously)
Backfilling after testing is done.

We are moving along nicely on project and some sort of answer as soon as possible from owners would be greatly appreciated on the request.

Bid item # 225

Additional \$1435.00 per structure.
Total \$7175.00

Matt DeSchamp
M D Construction, Inc.
1322 Hwy E27 Garwin, IA 50632
Office: 641-499-2136
Fax: 641-499-2078
Mobile: 641-751-2725

Tract	Taxing District	Parcel	Entity	Sec-Twp-Rng	Legal	Acres	% Benefit	Units Assessed	% Units Assessed	Percent of Levy	Assessment for Project (entire tract basis)	Assessment for Project (per acre basis)
1	0	----10	DED Iowa Dept of Transportation		PRIMARY HWY IN DD	70.00	100.00%	7000.00	9.270%	100	\$13,904.71	\$198.64
2	200	88-20-13-400-002	QCD Wiechmann, Kaylissa A	013-088-020	NE SE EX E32RDS N20RDS	14.28	22.83%	325.97	0.432%	100	\$647.51	\$45.34
3	200	88-20-24-300-001	DED Bright, Dean	024-088-020	NW SW	35.03	20.57%	720.55	0.954%	100	\$1,431.30	\$40.86
4	200	88-20-24-300-003	Bright, Dean	024-088-020	SW SW	38.64	17.25%	666.41	0.883%	100	\$1,323.75	\$34.26
5	200	88-20-23-400-005	DED Bright, Dean	023-088-020	SE SE	29.26	9.76%	285.53	0.378%	100	\$567.17	\$19.38
6	200	88-20-23-400-002	DED Bright, Dean	023-088-020	NE SE	0.05	4.03%	0.20	0.000%	100	\$0.40	\$8.01
7	210	88-20-26-200-005	Trampe, Sandra K	026-088-020	SE NE	18.95	16.83%	318.98	0.422%	100	\$633.61	\$33.44
8	210	88-20-26-200-002	Trampe, Sandra K	026-088-020	NE NE	36.85	12.81%	471.99	0.625%	100	\$937.56	\$25.44
9	210	88-20-26-200-004	Trampe, Sandra K	026-088-020	E 1/2 W 1/2 NE	12.49	7.72%	96.40	0.128%	100	\$191.48	\$15.33
10	200	88-20-24-300-002	DED Butler, Charles M	024-088-020	NE SW	40.00	23.15%	926.12	1.226%	100	\$1,839.64	\$45.99
11	200	88-20-24-300-004	COD Butler, Charles M	024-088-020	SE SW	38.64	29.33%	1133.30	1.501%	100	\$2,251.17	\$58.26
12	210	88-20-25-100-001	DED Butler, Charles M	025-088-020	N 3/8THS W1/2 NW	27.36	23.57%	644.97	0.854%	100	\$1,281.17	\$46.83
12.1	210	88-20-25-100-001	DED Butler, Charles M	025-088-020	N 3/8THS E1/2 NW	28.45	33.49%	952.92	1.262%	101	\$1,892.87	\$66.53
13	0	----2	DED Clay Township Roads		ROADS IN DISTRICT	20.00	24.64%	492.89	0.653%	100	\$979.07	\$48.95
14	240	88-19-19-100-002	Hake, Arlyn Daleske - LE	019-088-019	SW FRL NW	32.56	49.28%	1604.60	2.125%	100	\$3,187.36	\$97.89
15	200	88-20-24-200-003	Hake, Arlyn Daleske - LE	024-088-020	SW NE	40.00	22.06%	882.24	1.168%	100	\$1,752.47	\$43.81
16	200	88-20-24-200-005	Hake, Arlyn Daleske - LE	024-088-020	SE NE EX 7.06A TR	31.94	26.69%	852.53	1.129%	100	\$1,693.45	\$53.02
16.1	200	88-20-24-200-006	Gast, Terry G & Gast, Mary J	024-088-020	S436' E738' SE NE	7.06	28.12%	198.52	0.263%	100	\$394.34	\$55.85
17	200	88-20-24-100-004	Hake, Arlyn Daleske - LE	024-088-020	SE NW	40.00	17.08%	683.38	0.905%	100	\$1,357.47	\$33.94
18	240	88-19-19-100-003	Hake, Arlyn Daleske - LE	019-088-019	SE NW	40.00	35.46%	1418.44	1.878%	100	\$2,817.57	\$70.44
19	240	88-19-19-300-001	Hake, Arlyn Daleske - LE	019-088-019	W1/2 FRL N53A SW FRL	19.39	11.34%	219.91	0.291%	100	\$436.83	\$22.53
19.1	240	88-19-19-300-001	Hake, Arlyn Daleske - LE	019-088-019	E1/2 FRL N53A SW FRL	14.87	17.49%	260.03	0.344%	101	\$516.51	\$34.74
20	200	88-20-13-400-006	WDE Bakker, Rachel E Living Trust	013-088-020	N1/2 SW SE	12.81	24.68%	316.13	0.419%	100	\$627.96	\$49.02

Tract	Taxing District	Parcel	Entity	Sec-Twp-Rng	Legal	Acres	% Benefit	Units Assessed	% Units Assessed	Percent of Levy	Assessment for Project (entire tract basis)	Assessment for Project (per acre basis)
20.1	200	88-20-13-400-007	WDE Bakker, Rachel E Living Trust	013-088-020	N1/2 SE SE	19.55	32.35%	632.41	0.837%	100	\$1,256.22	\$64.26
21	200	88-20-13-400-009	Schuneman, Dwight A & Schuneman, Jean A	013-088-020	E1/2 NW SE	3.82	22.67%	86.58	0.115%	100	\$171.98	\$45.02
22	200	88-20-13-400-008	WDE Bakker, Jason L	013-088-020	S1/2 S1/2 SE EX HWY TR	25.31	20.20%	511.20	0.677%	100	\$1,015.44	\$40.12
23	240	88-19-17-100-009	QCD Clikeman, Bret D & Clikeman, Wendy L W	017-088-019	COM CTR SEC W723FT N366FT E20FT POB E181.5FT N462FT W 510FT S462FT E328.5' POB	5.36	31.33%	167.90	0.222%	100	\$333.52	\$62.22
24	200	88-20-24-100-001	TDE Fuller, Robert D - Trust - 1/2 & Fuller, Arleen V - Trust - 1/2	024-088-020	NW NW EX HWY TRACT	17.86	6.82%	121.76	0.161%	100	\$241.87	\$13.54
25	240	88-19-18-400-005	Gast, Terry & Gast, Mary	018-088-019	NW SE EX 2.77A TR	36.23	56.32%	2040.51	2.702%	100	\$4,053.25	\$111.88
25.1	240	88-19-18-400-006	Riss, Nancy M - Trust	018-088-019	COM E1/4 COR W1652.7' POB W411' S326.5' E411'N326.5'POB	2.77	34.95%	96.80	0.128%	100	\$192.28	\$69.42
26	240	88-19-18-400-003	Gast, Terry & Gast, Mary	018-088-019	SW SE EX HWY TR	33.99	39.22%	1333.00	1.765%	100	\$2,647.86	\$77.90
27	240	88-19-19-200-004	Gast, LaVerne R & Gast, Joan C	019-088-019	SE NE	35.00	15.15%	530.40	0.702%	100	\$1,053.58	\$30.10
28	240	88-19-19-200-003	Gast, LaVerne R & Gast, Joan C	019-088-019	SW NE	31.00	19.12%	592.64	0.785%	100	\$1,177.22	\$37.97
28.1	240	88-19-20-300-001	Gast, LaVerne R & Gast, Joan C	020-088-019	NW SW	6.28	1.69%	10.64	0.014%	100	\$21.13	\$3.37
28.2	240	88-19-20-300-002	QCD Gast, LaVerne R & Gast, Joan C	020-088-019	NE SW	3.08	6.91%	21.30	0.028%	100	\$42.30	\$13.73
29	240	88-19-18-300-005	Kramer, Marvin L & Kramer, Lora J	018-088-019	SE SW EX HWY TR	33.75	36.70%	1238.76	1.640%	100	\$2,460.65	\$72.91
30	240	88-19-19-100-004	Kramer, Lora Jane	019-088-019	NE NW EX HWY TR	38.00	52.77%	2005.33	2.656%	100	\$3,983.36	\$104.83
31	240	88-19-18-300-004	Kramer, Marvin L & Kramer, Lora J	018-088-019	SW FRL SW EX TRACTS	25.06	26.95%	675.28	0.894%	100	\$1,341.37	\$53.53
32	240	88-19-20-100-003	Havens, Ronald E & Havens, Joan M	020-088-019	BEG W1/4COR NE 365' N400' SW 365' S400' TO BEG	3.05	2.98%	9.10	0.012%	100	\$18.07	\$5.92
33	240	88-19-19-200-002	Hess, Douglas R & Bakker, Patricia Sue	019-088-019	NE NE EX HWY TR	36.61	26.84%	982.51	1.301%	100	\$1,951.64	\$53.31
34	240	88-19-19-200-001	Hess, Douglas R & Bakker, Patricia Sue	019-088-019	NW NE EX HWY TR	37.58	23.26%	873.98	1.157%	100	\$1,736.06	\$46.20
35	201	88-20-25-200-001	Hess, Douglas R & Bakker, Patricia Sue	025-088-020	NW NE	38.67	42.70%	1651.13	2.187%	100	\$3,279.79	\$84.81
36	201	88-20-25-200-002	Hess, Douglas R & Bakker, Patricia Sue	025-088-020	NE NE EX E333'	28.88	39.47%	1139.84	1.509%	100	\$2,264.16	\$78.40
37	201	88-20-25-200-004	Hess, Douglas R & Bakker, Patricia Sue	025-088-020	SE NE EX E333'	20.17	36.20%	730.20	0.967%	100	\$1,450.46	\$71.91
38	201	88-20-25-200-003	Hess, Douglas R & Bakker, Patricia Sue	025-088-020	SW NE	39.92	48.89%	1951.88	2.585%	100	\$3,877.18	\$97.12
39	0	----7	DED Jackson Township Roads		ROADS IN DISTRICT	30.00	24.64%	739.34	0.979%	100	\$1,468.61	\$48.95



Tract	Taxing District	Parcel	Entity	Sec-Twp-Rng	Legal	Acres	% Benefit	Units Assessed	% Units Assessed	Percent of Levy	Assessment for Project (entire tract basis)	Assessment for Project (per acre basis)
40	240	88-19-17-300-001	Kramer, Kenneth C & Janice R - Trust - 1/2 & Kramer, Janice R - 1/2	017-088-019	NW SW	38.00	46.10%	1751.71	2.320%	100	\$3,479.57	\$91.57
41	240	88-19-17-300-003	Kramer, Kenneth C & Janice R - Trust - 1/2 & Kramer, Janice R - 1/2	017-088-019	SW SW EX HWY TR	33.26	18.68%	621.44	0.823%	100	\$1,234.43	\$37.11
42	240	88-19-18-300-003	Kramer, Marvin L	018-088-019	COMM 751' N OF SW COR E288.5' N250.4' W288.5' S250.4' TO BEG.	1.47	8.93%	13.13	0.017%	100	\$26.08	\$17.74
43	240	88-19-19-100-001	Kramer, Marvin L	019-088-019	NW FRL NW EX HWY TR	29.23	78.16%	2284.63	3.025%	100	\$4,538.16	\$155.26
44	240	88-19-18-100-006	Kramer, Mildred	018-088-019	NE SE NW & SE NE NW & S93.6FT E 1/4 N 1/4 NW	18.99	26.37%	500.83	0.663%	100	\$994.83	\$52.39
45	240	88-19-18-400-002	Kramer, Mildred	018-088-019	NE SE	38.00	52.88%	2009.34	2.661%	100	\$3,991.33	\$105.04
46	240	88-19-18-400-004	Kramer, Mildred	018-088-019	SE SE EX HWY TR	33.33	31.92%	1063.99	1.409%	100	\$2,113.49	\$63.41
47	240	88-19-18-200-002	Rickert, Linda D - Trust	018-088-019	NW NE EX TRACT	31.46	19.58%	616.12	0.816%	100	\$1,223.85	\$38.90
47.1	240	88-19-18-200-003	Kies, Jonathan D & Kies, Jessica C	018-088-019	S661' W516' N1/2 NE	7.54	15.74%	118.68	0.157%	100	\$235.75	\$31.27
48	240	88-19-18-200-006	Rickert, Linda D - Trust	018-088-019	NE NE	39.83	19.62%	781.31	1.035%	100	\$1,551.98	\$38.97
49	201	88-20-25-400-001	Lawler, Gail M - 1/2 & Lawler, Gail M - LE - 1/2	025-088-020	NW SE	20.18	43.78%	883.57	1.170%	100	\$1,755.12	\$86.97
50	200	88-20-24-400-003	Luiken, Arnold D & Luiken, Linda M	024-088-020	SW SE	38.64	32.92%	1272.21	1.685%	100	\$2,527.10	\$65.40
51	200	88-20-24-400-001	Luiken, Arnold - 2/3 & Luiken, Arnold & Linda - 1/3	024-088-020	NW SE	40.00	35.07%	1402.84	1.858%	100	\$2,786.58	\$69.66
52	200	88-20-24-400-002	Luiken, Margaret E	024-088-020	E1/2 NE SE	19.00	27.01%	513.27	0.680%	100	\$1,019.55	\$53.66
52.1	200	88-20-24-400-005	Luiken, Arnold & Luiken, Linda	024-088-020	W1/2 NE SE	20.00	26.20%	523.97	0.694%	100	\$1,040.81	\$52.04
53	200	88-20-24-400-004	Luiken, Margaret E	024-088-020	SE SE	37.64	24.99%	940.52	1.245%	100	\$1,868.24	\$49.63
54	240	88-19-17-300-004	Northco, Inc	017-088-019	SE SW EX HWY TR	32.15	20.86%	670.77	0.888%	100	\$1,332.41	\$41.44
55	240	88-19-17-400-001	Northco, Inc	017-088-019	NW SE	28.03	17.01%	476.80	0.631%	100	\$947.11	\$33.79
56	200	88-20-23-400-004	TDE Bright, Dean	023-088-020	E 1/2 SW SE	6.65	5.53%	36.75	0.049%	100	\$73.00	\$10.98
57	240	88-19-18-100-005	Price, Stanley Charles & Price, Daniel L	018-088-019	PART OF NE NE NW	6.45	6.80%	43.83	0.058%	100	\$87.06	\$13.50
57.1	240	88-19-18-100-004	Price, Stanley Charles & Price, Daniel L	018-088-019	N1/3 W1/2 NE NE NW	1.14	4.32%	4.93	0.007%	100	\$9.78	\$8.58
58	210	88-20-25-300-004	Reece, Kennerly	025-088-020	SE SW	9.05	17.56%	158.95	0.210%	100	\$315.74	\$34.89
59	210	88-20-25-300-006	Reece, Kennerly	025-088-020	NW SW EX TR IN NW COR	37.15	21.37%	793.90	1.051%	100	\$1,577.00	\$42.45

Tract	Taxing District	Parcel	Entity	Sec-Twp-Rng	Legal	Acres	% Benefit	Units Assessed	% Units Assessed	Percent of Levy	Assessment for Project (entire tract basis)	Assessment for Project (per acre basis)
59.1	210	88-20-25-300-005	TDE Eggleston, Steven R & Eggleston, Janice L	025-088-020	BEG W1/4 COR N65' E204' S415.32' W194.8' N347' BEG	1.46	9.69%	14.14	0.019%	100	\$28.09	\$19.24
60	210	88-20-25-100-005	Reece, Kennerly	025-088-020	S 1/4 NW EX .23A TR IN SW COR	38.56	35.75%	1378.45	1.825%	100	\$2,738.14	\$71.01
61	210	88-20-25-300-002	Reece, Kennerly	025-088-020	NE SW	40.00	41.97%	1678.64	2.223%	100	\$3,334.42	\$83.36
62	210	88-20-25-100-002	Reece, Kennerly	025-088-020	N 3/5 S 5/8 W1/2 NW	28.88	17.08%	493.29	0.653%	100	\$979.86	\$33.93
62.1	210	88-20-25-100-002	Reece, Kennerly	025-088-020	N 3/5 S 5/8 E1/2 NW	29.87	38.02%	1135.57	1.504%	101	\$2,255.68	\$75.52
63	200	88-20-13-300-005	Roll, Michael J & Roll, Frank J	013-088-020	SE SW EX HWY TR	9.62	8.58%	82.52	0.109%	102	\$163.91	\$17.04
64	200	88-20-24-100-002	Roll, Michael J & Roll, Frank J	024-088-020	NE NW EX HWY TR	36.53	15.66%	571.96	0.757%	103	\$1,136.13	\$31.10
65	200	88-20-24-200-001	Roll, Michael J & Roll, Frank J	024-088-020	NW NE EX HWY TR	37.14	18.77%	697.15	0.923%	104	\$1,384.80	\$37.29
66	200	88-20-24-200-002	Roll, Michael J & Roll, Frank J	024-088-020	NE NE EX HWY TR	36.06	32.35%	1166.45	1.545%	105	\$2,317.03	\$64.25
67	200	88-20-24-100-003	Schuneman, Margaret - LE	024-088-020	SW NW	16.91	15.80%	267.23	0.354%	106	\$530.83	\$31.39
68	240	88-19-17-200-004	Schuneman, Margaret - LE	017-088-019	SW NE	10.73	11.33%	121.55	0.161%	107	\$241.44	\$22.50
69	240	88-19-18-100-007	Smith, Dennise K	018-088-019	S 1/2 SE NW	14.73	27.92%	411.31	0.545%	108	\$817.01	\$55.47
70	240	88-19-18-300-002	Smith, Dennise K	018-088-019	NE SW	40.00	24.89%	995.63	1.318%	109	\$1,977.70	\$49.44
71	240	88-19-19-300-002	QCD Gast, LaVerne R & Gast, Joan C	019-088-019	S20.30A N 1/2 SW FRL	0.14	18.03%	2.52	0.003%	110	\$5.01	\$35.81
71.1	240	88-19-19-300-004	Gast, LaVerne R & Gast, Joan C	019-088-019	SE SW	0.00	0.00%	0.00	0.000%	111	\$0.00	\$0.00
71.2	240	88-19-19-300-003	TDE Gast, LaVerne R & Gast, Joan C	019-088-019	SW FRL SW	9.38	21.70%	203.51	0.270%	112	\$404.25	\$43.10
71.3	240	88-19-19-400-002	TDE Gast, LaVerne R & Gast, Joan C	019-088-019	NE SE	0.00	0.00%	0.00	0.000%	113	\$0.00	\$0.00
71.4	240	88-19-19-400-001	QCD Gast, LaVerne R & Gast, Joan C	019-088-019	NW SE	0.00	0.00%	0.00	0.000%	114	\$0.00	\$0.00
72	240	88-19-17-100-003	SWS Farms, LLP	017-088-019	W1/2 SW NW	19.50	28.13%	548.46	0.726%	115	\$1,089.44	\$55.87
73	240	88-19-18-200-004	SWS Farms, LLP	018-088-019	SW NE	38.20	38.12%	1456.13	1.928%	116	\$2,892.45	\$75.72
74	240	88-19-18-200-007	SWS Farms, LLP	018-088-019	SE NE	39.00	26.82%	1046.11	1.385%	117	\$2,077.97	\$53.28
75	201	88-20-25-200-005	Taylor Trust No 2015; Hansmann, Paul N & Laura R & Rogers, Jack E & Karol A;Mahl, Robert V & Jean L	025-088-020	E333' E1/2 NE1/4	10.88	22.29%	242.53	0.321%	118	\$481.75	\$44.28
76	240	88-19-17-300-002	Taylor Trust No 2015; Hansmann, Paul N & Laura R & Rogers, Jack E & Karol A;Mahl, Robert V & Jean L	017-088-019	NE SW	39.00	28.74%	1120.74	1.484%	119	\$2,226.22	\$57.08

Tract	Taxing District	Parcel	Entity	Sec-Twp-Rng	Legal	Acres	% Benefit	Units Assessed	% Units Assessed	Percent of Levy	Assessment for Project (entire tract basis)	Assessment for Project (per acre basis)
77	240	88-19-17-100-002	Taylor Trust No 2015; Hansmann, Paul N & Laura R & Rogers, Jack E & Karol A;Mahl, Robert V & Jean L	017-088-019	NE NW	3.73	23.67%	88.30	0.117%	120	\$175.40	\$47.03
78	240	88-19-17-100-004	Taylor Trust No 2015; Hansmann, Paul N & Laura R & Rogers, Jack E & Karol A;Mahl, Robert V & Jean L	017-088-019	E1/2 SW NW	19.50	42.75%	833.65	1.104%	121	\$1,655.96	\$84.92
79	240	88-19-17-100-010	Taylor Trust No 2015; Hansmann, Paul N & Laura R & Rogers, Jack E & Karol A;Mahl, Robert V & Jean L	017-088-019	SE NW EX TRACTS	33.21	36.15%	1200.49	1.590%	122	\$2,384.63	\$71.80
80	240	88-19-17-100-001	Taylor Trust No 2015; Hansmann, Paul N & Laura R & Rogers, Jack E & Karol A;Mahl, Robert V & Jean L	017-088-019	NW NW	23.61	21.82%	515.21	0.682%	123	\$1,023.42	\$43.35
80.1	240	88-19-30-100-001	Taylor Trust No 2015; Hansmann, Paul N & Laura R & Rogers, Jack E & Karol A;Mahl, Robert V & Jean L	030-088-019	NW FRL NW	12.34	48.43%	597.69	0.791%	124	\$1,187.24	\$96.21
81	240	88-19-20-100-001	Vande Voort, Dorothy L - 38.16% & Vande Voort, Dorothy L - LE - 61.84%	020-088-019	NW NW EX HWY TR	36.45	22.88%	833.83	1.104%	125	\$1,656.30	\$45.44
81.2	240	88-19-20-100-002	Vande Voort, Dorothy L - 38.16% & Vande Voort, Dorothy L - LE - 61.84%	020-088-019	NE NW EX HWY TR	35.98	14.74%	530.22	0.702%	126	\$1,053.22	\$29.27
81.3	240	88-19-20-100-005	Vande Voort, Dorothy L - 38.16% & Vande Voort, Dorothy L - LE - 61.84%	020-088-019	SE NW	35.84	8.70%	311.87	0.413%	127	\$619.49	\$17.28
82	240	88-19-20-100-004	Vande Voort, Dorothy L - 38.16% & Vande Voort, Dorothy L - LE - 61.84%	020-088-019	SW NW EX 3.35A TRACT	35.65	14.77%	526.63	0.697%	128	\$1,046.09	\$29.34
83	200	88-20-13-300-004	Perisho, Betty	013-088-20	SW SW EX HWY TR	8.11	1.80%	14.57	0.019%	129	\$28.94	\$3.57
84	240	88-19-18-300-001	Keninger, Mark	018-088-019	NW FRL SW	24.46	13.45%	328.87	0.436%	130	\$653.26	\$26.71
85	240	88-19-18-100-009	Keninger, Mark	018-088-019	W FRL 1/2 NW S OF 185TH ST	0.10	7.96%	0.80	0.001%	131	\$1.58	\$15.82
					Averages			726.10				\$49.02
					Totals	2533.33			100.000%		\$150,000.00	



Drainage Work Order Request For Repair

Hardin County

Date: 3/7/2018

Work Order #: WO00000205

Drainage District: Drainage Districts \DD 1

Sec-Twp-Rge: 25-88-20 **Qtr Sec:** S1/2

Location/GIS: _____

Requested By: Marvin Kramer

Contact Phone: (641) 485-2536

Contact Email: _____

Landowner (if different): _____

Description: Would like the waterway downstream cleaned out that was not part of the 2017 project (as discussed at 3/7/2017 completion hearing).
25-88-19

Repair labor, materials and equipment: _____

Repaired By: _____ **Date:** _____

Please reference work order # and send statement for services to:

Hardin County Auditor's Office
Attn: Drainage Clerk
1215 Edgington Ave, Suite 1
Eldora, IA 50627
Phone (641) 939-8111
Fax (641) 939-8245

For Office Use Only

Approved: _____ **Date:** _____

Tina Schlemme

From: Taylor Roll
Sent: Friday, March 16, 2018 2:33 PM
To: Tina Schlemme
Subject: D.D. Waterway Seeding

Tina,

A discussion with a local farmer, Curt Bunte, brought up a question on some work within a drainage district last year. The field in question, I believe is owned by his parents, located NW of the intersection of G & 290th had a grass waterway over the county tile. As the work in the DD was getting finished he asked Jacob Handsaker about reseeding his waterway. Jacob informed him that it wasn't on the contract, and it would be the landowner's responsibility. Whether it was an oversight by Ryken/CGA or we chose not to include it, I think that we as a county should return the ground to its previous condition. Especially since I know without that grass waterway, most of the dirt will wash right into our county roadside. I commend farmers that have grass waterways, so I'd hate to lose one.

Taylor Roll, P.E.
Hardin County Engineer
708 16th Street
Eldora, IA 50627
Office: (641) 858-5058
Cell: (515) 851-5566

468.188 Public improvements which divide a district--procedure.

If it should develop that any type of public improvement, other than the forces of nature, has caused such a change in the district as to effectively sever and cut off some of the land in the district from other lands in the district and from the improvements in the district in such a way as to deprive the land of any further benefits from the improvement, or in some manner to divide the benefits that may be derived from two separated portions of the improvement, then the board of supervisors or the board of trustees in charge may upon notice to interested parties and hearing as provided by this subchapter, parts 1 through 5, for the original establishment of a district make an order to remove lands so deprived of benefits from the district without any reclassification, or may subdivide the district into two separate entities if the public improvement splits the district into two separate units, each of which may still derive some separate benefits from the separated portions of the district.

If the public improvement is such as to leave two separate portions of the improvement that are still operable and of benefit to the land on each side of the division made by the public improvement, then the board may divide the district into two separate units so that each may perform further work on the improvements in their respective parts, but neither shall be charged for work completed on the opposite side of the new improvement that divides them and may only be charged for the work done in that portion of the district remaining on their side of the division.

The same authority provided in this section shall vest in the board of supervisors or the board of trustees in the event a drainage district in any manner relinquishes its control over any portion of its improvements or its obligation to maintain same to another district and lands may be removed from the district or the district may be divided as provided in this section.

The board may further in dividing the district award to each of the separated portions of the district the improvement remaining in each portion, determine the value of the improvement so remaining on each side and secondly determine the contributions of the lands in the separated portions to the improvements and the upkeep of the earlier district, and if the contribution is proportionate neither side shall owe the other portion of the district any money, but if contribution is disproportionate, the board shall determine an equitable adjustment and the amount of payment required for one portion to pay to the other to buy the existing improvement.

If land is eliminated from any further benefits, there need not be any reclassification and the board may remove the same from the district in the same manner as if the land has been destroyed in whole by the erosion of a river and spread any deficiency in assessment among the remaining lands as provided by section 468.49.

"Type of public improvement" for the purpose of this section includes drainage or levee improvements or new highways.

Section History: Early form

[C71, 73, 75, 77, 79, 81, § 455.201]

Section History: Recent form

89 Acts, ch 126, § 2

CS89, § 468.188

Internal References

Referred to in § 468.92, 468.250, 468.396

**OPINIONS OF PROBABLE COST
DRAINAGE DISTRICT NO. 22 OPTIONS**

Date: January 2017

Hardin County, Iowa



	LANDOWNER SHARE						COUNTY SHARE						GRAND TOTAL		
	BASE BID CONSTRUCTION	PROFESSIONAL SERVICES ESTIMATE (BASE BID)	ALTERNATE BID (RCP) CONSTRUCTION	PROFESSIONAL SERVICES ADDER ESTIMATE FOR ALTERNATE BID	LAND / EASEMENT AGREEMENTS	CONTINGENCY	TOTAL	BASE BID CONSTRUCTION	PROFESSIONAL SERVICES ESTIMATE (BASE BID)	ALTERNATE BID (RCP) CONSTRUCTION	PROFESSIONAL SERVICES ADDER ESTIMATE FOR ALTERNATE BID	LAND / EASEMENT AGREEMENTS		CONTINGENCY	TOTAL
30" Replacement w/ Spot Repair	\$ 417,774.44	\$ 87,123.00	\$ 122,752.00	\$ 33,695.00	\$ -	\$ 55,657.56	\$ 717,002.00	\$ 85,725.56	\$ 17,877.00	\$ 8,400.00	\$ 2,305.00	\$ -	\$ 9,690.44	\$ 123,998.00	\$ 841,000
Modification A	\$ 761,900.60	\$ 165,033.00	\$ 290,805.00	\$ 76,440.00	\$ -	\$ 95,920.40	\$ 1,390,099.00	\$ 69,099.40	\$ 14,967.00	\$ 13,545.00	\$ 3,560.00	\$ -	\$ 7,529.60	\$ 108,701.00	\$ 1,498,800
Modification B	\$ 594,384.56	\$ 148,187.00	\$ 169,712.00	\$ 46,331.00	\$ -	\$ 76,354.44	\$ 1,034,969.00	\$ 131,615.44	\$ 32,813.00	\$ 13,440.00	\$ 3,669.00	\$ -	\$ 14,493.56	\$ 196,031.00	\$ 1,231,000
Modification C	\$ 446,821.75	\$ 111,065.00	\$ 59,520.00	\$ 14,981.00	\$ 120,000.00	\$ 50,785.25	\$ 803,173.00	\$ 76,178.25	\$ 18,935.00	\$ 31,860.00	\$ 8,019.00	\$ -	\$ 10,834.75	\$ 145,827.00	\$ 949,000
Modification D	\$ 418,935.40	\$ 102,758.00	\$ 5,200.00	\$ 1,291.00	\$ 210,000.00	\$ 42,435.60	\$ 780,620.00	\$ 111,064.60	\$ 27,242.00	\$ 64,500.00	\$ 16,009.00	\$ -	\$ 17,564.40	\$ 236,380.00	\$ 1,017,000
Modification E	\$ 738,266.00	\$ 171,469.00	\$ 200,935.00	\$ 68,462.00	\$ 120,000.00	\$ 95,362.00	\$ 1,394,494.00	\$ 36,734.00	\$ 8,531.00	\$ 4,515.00	\$ 1,538.00	\$ -	\$ 4,188.00	\$ 55,506.00	\$ 1,450,000
Add On F	\$ 145,040.40	\$ 35,802.00	\$ 25,425.00	\$ 7,243.00	\$ -	\$ 17,328.60	\$ 230,839.00	\$ 12,959.60	\$ 3,198.00	\$ 2,660.00	\$ 757.00	\$ -	\$ 1,586.40	\$ 21,161.00	\$ 252,000

Modification A: Replace both supplemental 30-inch and original main tile with a single, larger tile following old route.

Modification B: Replace supplemental 30-inch in place on 2011 alignment and replace original main tile with 24-inch in original alignment.

Modification C: Open Ditch to south side of Silvest acreage. From there upstream, replace supplemental 30-inch in place on 2011 alignment and tie-into original main tile with 24-inch.

Modification D: Open Ditch to replace 2011 supplemental 30-inch, connect original main tile with 18-inch.

Modification E: Open Ditch from Outlet to South Side 200th St. Replace remaining supplemental 30-inch and original main tile with a single, larger tile following old route.

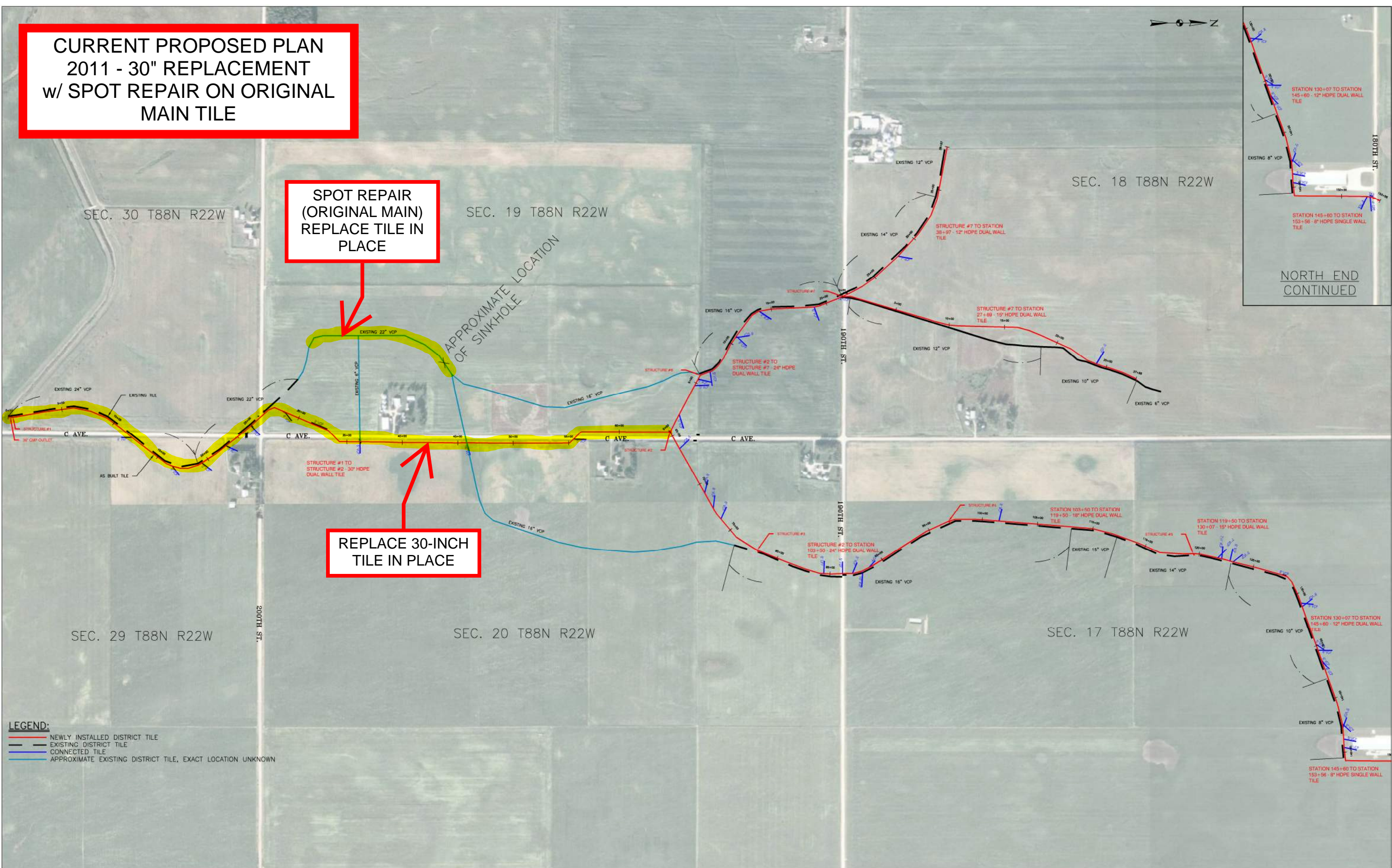
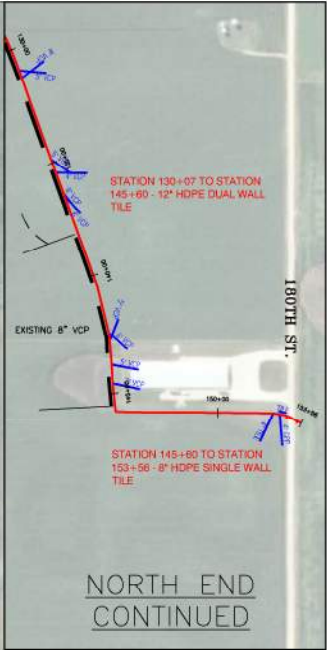
Add On F: Replace a section of 16" VCP original main tile with an 18" tile

**CURRENT PROPOSED PLAN
2011 - 30" REPLACEMENT
w/ SPOT REPAIR ON ORIGINAL
MAIN TILE**

**SPOT REPAIR
(ORIGINAL MAIN)
REPLACE TILE IN
PLACE**

**REPLACE 30-INCH
TILE IN PLACE**

APPROXIMATE LOCATION
OF SINKHOLE



- LEGEND:**
- NEWLY INSTALLED DISTRICT TILE
 - EXISTING DISTRICT TILE
 - CONNECTED TILE
 - APPROXIMATE EXISTING DISTRICT TILE, EXACT LOCATION UNKNOWN



NO.	REVISION	BY	DATE	NO.	REVISION	BY	DATE

CGA
Clipsadle-Garber Associates, Inc.
16 East Main Street
Marshalltown, Iowa 50158
Ph: 641-792-6701
www.cgaconsultants.com

DESIGNED: HAT DATE: ###
DRAWN: ### DATE: ###
CHECKED: ### DATE: ###
APPROVED: ### DATE: ###

**DRAINAGE DISTRICT 22
HARDIN COUNTY, IOWA**

IMPROVEMENT OPTIONS

PROJECT NO.
8712
SHEET NO.
1

J:\97_2\dwg\chris\10 018 Meeting\Improvement Options.dwg - CGA Plan - 01-22-18 - 2:31pm - HAT323

OPINION OF PROBABLE COST
CURRENT PROPOSED PLAN w/ SPOT REPAIR ON ORIGINAL
MAIN TILE - DRAINAGE DISTRICT NO. 22

Date: January 2017

Hardin County, Iowa



BASE BID

<u>ITEM NO.</u>	<u>DESCRIPTION</u>	<u>QUANTITY</u>	<u>UNIT COST</u>	<u>EXTENSION</u>
1	30" Ø POLYPROPYLENE TILE	6,397 LF	\$47.00	\$300,659.00
2	CCTV INSPECTION OF ROADWAY CROSSING TILE	300 LF	\$5.00	\$1,500.00
3	30" Ø POLYPROPYLENE TILE - ROAD CROSSING	300 LF	\$100.00	\$30,000.00
4	CONNECTION TO ROAD CROSSING TILE TO REMAIN	8 EACH	\$400.00	\$3,200.00
5	CONNECTION TO EXISTING STRUCTURE	2 EACH	\$800.00	\$1,600.00
6	PRIVATE TILE OR INTAKE CONNECTION	10 EACH	\$400.00	\$4,000.00
7	INTAKE, ROAD ROW	10 EACH	\$3,500.00	\$35,000.00
8	REMOVAL AND DISPOSAL OF SUPPLEMENTAL TILE	6,697 LF	\$7.00	\$46,879.00
9	CLEANUP, SHAPING, AND SEEDING	1 LS	\$4,268.00	\$4,268.00
10	CCTV INSPECTION OF TILE - POST CONSTRUCTION	6,697 LF	\$2.00	\$13,394.00
11	SPOT REPAIR WITH PP - ORIGINAL MAIN TILE (EST 1500 LF)	1 LS	\$63,000.00	\$63,000.00
Total Budgeted Construction Costs (PE PIPE):				\$503,500

ALTERNATE BID PROJECT QUANTITIES

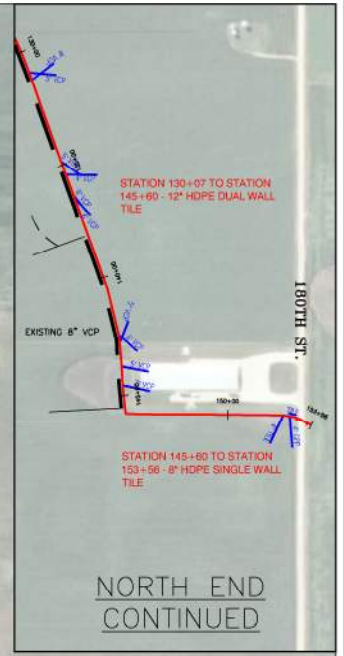
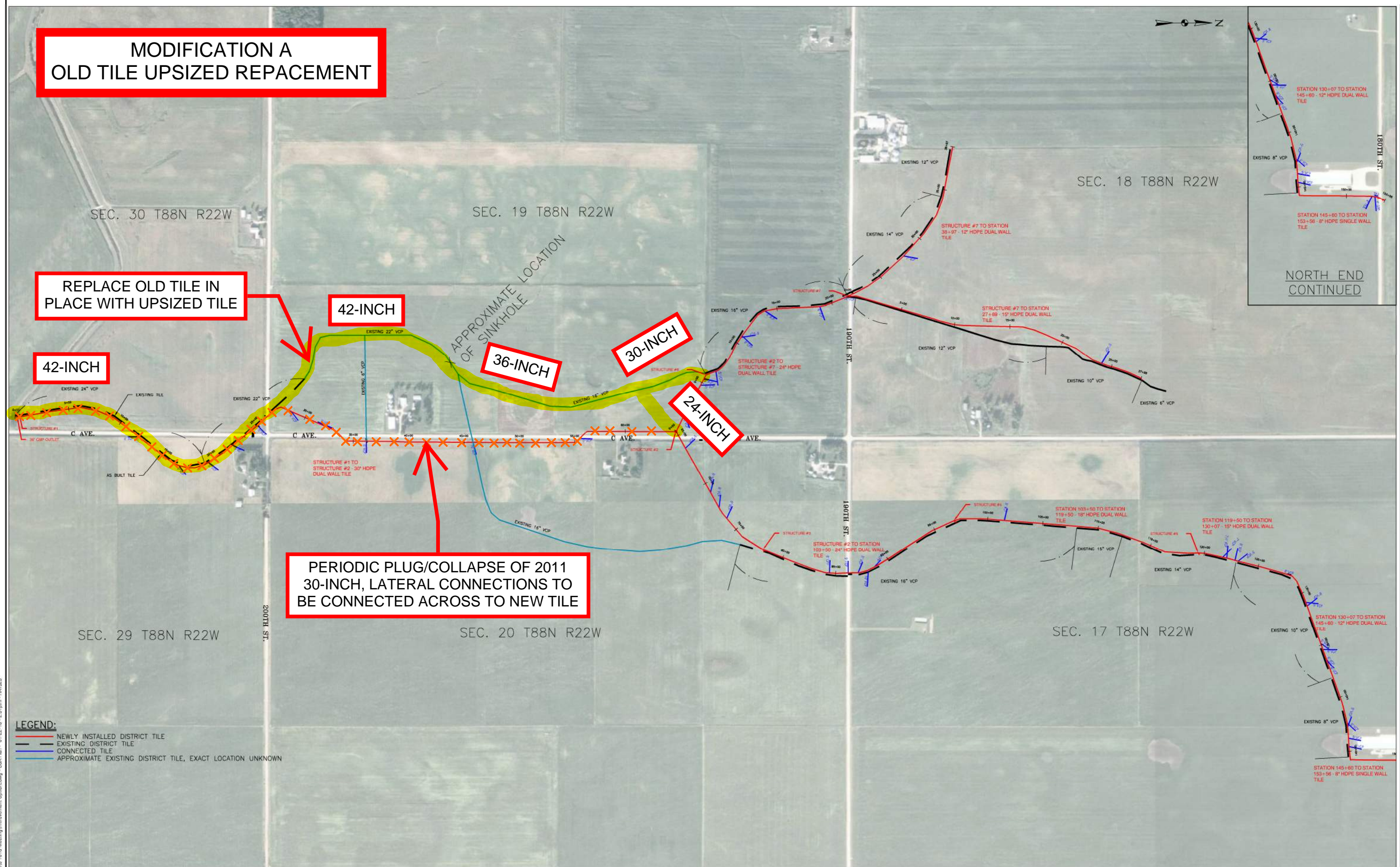
1A	30" 2000D RCP IN PLACE OF 30" POLYPROPYLENE	6,397 LF	\$18.00	\$115,146
3A	30" 2000D RCP IN PLACE OF 30" POLYPROPYLENE	300 LF	\$18.00	\$5,400
DEDUCT 10	CCTV INSPECTION OF TILE - POST CONSTRUCTION	6,697 LF	-\$2.00	-\$13,394
11A	SPOT REPAIR WITH RCP - ORIGINAL MAIN TILE	1 LS	\$24,000.00	\$24,000
Total Budgeted Construction Costs (RCP PIPE):				\$634,652

10% +/- Contingency	\$	65,348
Professional Services Estimate (Base Bid)	\$	105,000
Professional Services Estimate (Additional Construction Observation for Alternate Bid - Slower Construction)	\$	36,000

TOTAL \$841,000

	Landowner Share	County Share
Base Bid	\$ 417,774.44	\$ 85,725.56
Alternate Bid	\$ 122,752.00	\$ 8,400.00
Contingency	\$ 55,657.56	\$ 9,690.44
Professional Services (Base Bid)	\$ 87,123.00	\$ 17,877.00
Professional Services (Alternate Bid)	\$ 33,695.00	\$ 2,305.00
	\$ 717,002.00	\$ 123,998.00

**MODIFICATION A
OLD TILE UPSIZED REPAACEMENT**



J:\97_2\dwg\chris\10 018 Meeting\Improvement Options.dwg - CGA Plan - 01-22-18 - 2:31pm - HAT323

<p>LEGEND:</p> <ul style="list-style-type: none"> NEWLY INSTALLED DISTRICT TILE EXISTING DISTRICT TILE CONNECTED TILE APPROXIMATE EXISTING DISTRICT TILE, EXACT LOCATION UNKNOWN 	NO.	REVISION	BY	DATE	NO.	REVISION	BY	DATE	<p>DESIGNED: HAT DATE: ###</p> <p>DRAWN: ### DATE: ###</p> <p>CHECKED: ### DATE: ###</p> <p>APPROVED: ### DATE: ###</p>	<p>DRAINAGE DISTRICT 22 HARDIN COUNTY, IOWA</p>	<p>IMPROVEMENT OPTIONS</p>	PROJECT NO.
												8712
<p>GRAPHIC SCALE: 0 400 800 1200</p>												SHEET NO.
<p>CGA Clippard-Garber Associates, Inc. 16 East Main Street Marshalltown, Iowa 50158 Ph: 641-792-6701 www.cgaconsultants.com</p>												1

**OPINION OF PROBABLE COST
MODIFICATION A - DRAINAGE DISTRICT NO. 22**

Date: January 2017

Hardin County, Iowa



BASE BID

<u>ITEM NO.</u>	<u>DESCRIPTION</u>	<u>QUANTITY</u>	<u>UNIT COST</u>	<u>EXTENSION</u>
1	42" Ø POLYPROPYLENE TILE	4,570 LF	\$80.00	\$365,600.00
2	36" Ø POLYPROPYLENE TILE	1,750 LF	\$65.00	\$113,750.00
3	30" Ø POLYPROPYLENE TILE	700 LF	\$47.00	\$32,900.00
4	24" Ø POLYPROPYLENE TILE	1,400 LF	\$43.00	\$60,200.00
5	48" Ø OUTLET	1 EACH	\$6,000.00	\$6,000.00
6	42" Ø POLYPROPYLENE TILE - ROAD CROSSING	180 LF	\$160.00	\$28,800.00
7	NEW JUNCTION STRUCTURES	5 EACH	\$5,000.00	\$25,000.00
8	PRIVATE TILE OR INTAKE CONNECTION	20 EACH	\$400.00	\$8,000.00
9	PRIVATE TILE LINE EXTENSIONS	1 LS	\$30,000.00	\$30,000.00
10	INTAKE, ROAD ROW	6 EACH	\$3,500.00	\$21,000.00
11	DISCONNECT AND CRUSH SUPPLEMENTAL TILE	6,697 LF	\$10.00	\$66,970.00
12	REMOVAL AND DISPOSAL OF MAIN TILE	7,200 LF	\$7.00	\$50,400.00
13	CLEANUP, SHAPING, AND SEEDING	1 LS	\$5,180.00	\$5,180.00
14	CCTV INSPECTION OF TILE - POST CONSTRUCTION	8,600 LF	\$2.00	\$17,200.00
Total Budgeted Construction Costs (PE PIPE):				\$831,000

ALTERNATE BID PROJECT QUANTITIES

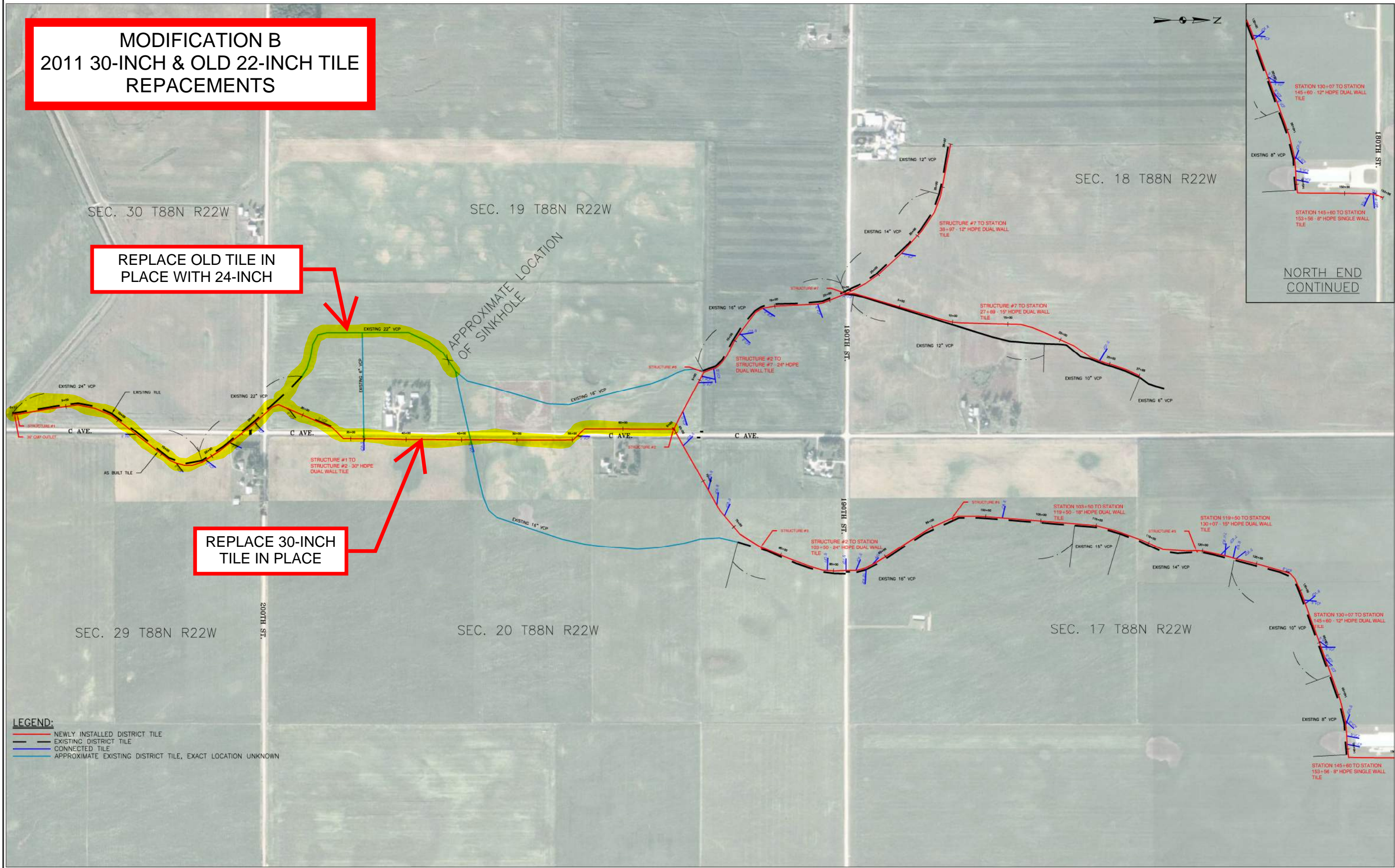
1A	42" 2000D RCP IN PLACE OF 42" POLYPROPYLENE	4,570 LF	\$45.00	\$205,650
2A	36" 2000D RCP IN PLACE OF 36" POLYPROPYLENE	1,750 LF	\$40.00	\$70,000
3A	30" 2000D RCP IN PLACE OF 30" POLYPROPYLENE	700 LF	\$18.00	\$12,600
4A	24" 2000D RCP IN PLACE OF 24" POLYPROPYLENE	1,400 LF	\$18.00	\$25,200
6A	42" 2000D RCP IN PLACE OF 42" POLYPROPYLENE	180 LF	\$45.00	\$8,100
DEDUCT 14	CCTV INSPECTION OF TILE - POST CONSTRUCTION	8,600 LF	-\$2.00	-\$17,200
Total Budgeted Construction Costs (RCP PIPE):				\$1,135,350

10% +/- Contingency \$ 103,450
Professional Services Estimate (Base Bid) \$ 180,000
Professional Services Estimate (Additional Construction Observation for Alternate Bid - Slower Construction) \$ 80,000

TOTAL \$1,498,800

	Landowner Share		County Share	
Base Bid	\$	761,900.60	\$	69,099.40
Alternate Bid	\$	290,805.00	\$	13,545.00
Contingency	\$	95,920.40	\$	7,529.60
Professional Services (Base Bid)	\$	165,033.00	\$	14,967.00
Professional Services (Alternate Bid)	\$	76,440.00	\$	3,560.00
	\$	1,390,099.00	\$	108,701.00

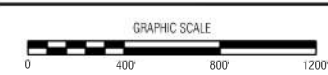
MODIFICATION B 2011 30-INCH & OLD 22-INCH REPLACEMENTS



REPLACE OLD TILE IN PLACE WITH 24-INCH

REPLACE 30-INCH TILE IN PLACE

LEGEND:
 - NEWLY INSTALLED DISTRICT TILE
 - EXISTING DISTRICT TILE
 - CONNECTED TILE
 - APPROXIMATE EXISTING DISTRICT TILE, EXACT LOCATION UNKNOWN



NO.	REVISION	BY	DATE	NO.	REVISION	BY	DATE

CGA Clipsadle-Garber Associates, Inc.
 16 East Main Street
 Marshalltown, Iowa 50158
 P: 641-792-6701
 www.cgaconsultants.com

DESIGNED: HAT DATE: ###
 DRAWN: ### DATE: ###
 CHECKED: ### DATE: ###
 APPROVED: ### DATE: ###

DRAINAGE DISTRICT 22 HARDIN COUNTY, IOWA

IMPROVEMENT OPTIONS

PROJECT NO. 8712
 SHEET NO. 1

J:\97_2\dwg\chris\10 018 Meeting\Improvement Options.dwg - CGA Plan - 01-22-18 - 2:31pm - HAT323

**OPINION OF PROBABLE COST
MODIFICATION B - DRAINAGE DISTRICT NO. 22**

Date: January 2017

Hardin County, Iowa



BASE BID

<u>ITEM NO.</u>	<u>DESCRIPTION</u>	<u>QUANTITY</u>		<u>UNIT COST</u>	<u>EXTENSION</u>
1	30" Ø POLYPROPYLENE TILE	6,397	LF	\$47.00	\$300,659.00
2	24" Ø POLYPROPYLENE TILE	4,570	LF	\$43.00	\$196,510.00
3	CCTV INSPECTION OF ROADWAY CROSSING TILE	300	LF	\$5.00	\$1,500.00
4	30" Ø POLYPROPYLENE TILE - ROAD CROSSING	300	LF	\$100.00	\$30,000.00
5	24" Ø POLYPROPYLENE TILE - ROAD CROSSING	180	LF	\$90.00	\$16,200.00
6	NEW JUNCTION STRUCTURE	1	EACH	\$5,000.00	\$5,000.00
7	CONNECTION TO ROAD CROSSING TILE TO REMAIN	8	EACH	\$400.00	\$3,200.00
8	CONNECTION TO EXISTING STRUCTURE	3	EACH	\$800.00	\$2,400.00
9	PRIVATE TILE OR INTAKE CONNECTION	18	EACH	\$400.00	\$7,200.00
10	INTAKE, ROAD ROW	16	EACH	\$3,500.00	\$56,000.00
11	REMOVAL AND DISPOSAL OF SUPPLEMENTAL TILE	6,697	LF	\$7.00	\$46,879.00
12	REMOVAL AND DISPOSAL OF MAIN TILE	4,750	LF	\$7.00	\$33,250.00
13	CLEANUP, SHAPING, AND SEEDING	1	LS	\$4,308.00	\$4,308.00
14	CCTV INSPECTION OF TILE - POST CONSTRUCTION	11,447	LF	\$2.00	\$22,894.00

Total Budgeted Construction Costs (PE PIPE): \$726,000

ALTERNATE BID PROJECT QUANTITIES

1A	30" 2000D RCP IN PLACE OF 30" POLYPROPYLENE	6,397	LF	\$18.00	\$115,146
2A	24" 2000D RCP IN PLACE OF 24" POLYPROPYLENE	4,570	LF	\$18.00	\$82,260
4A	30" 2000D RCP IN PLACE OF 30" POLYPROPYLENE	300	LF	\$18.00	\$5,400
5A	24" 2000D RCP IN PLACE OF 24" POLYPROPYLENE	180	LF	\$18.00	\$3,240
DEDUCT 14	CCTV INSPECTION OF TILE - POST CONSTRUCTION	11,447	LF	-\$2.00	-\$22,894

Total Budgeted Construction Costs (RCP PIPE): \$909,152

10% +/- Contingency \$ 90,848
Professional Services Estimate (Base Bid) \$ 181,000
Professional Services Estimate (Additional Construction Observation for Alternate Bid - Slower Construction) \$ 50,000

TOTAL \$1,231,000

	Landowner Share	County Share
Base Bid	\$ 594,384.56	\$131,615.44
Alternate Bid	\$ 169,712.00	\$ 13,440.00
Contingency	\$ 76,354.44	\$ 14,493.56
Professional Services (Base Bid)	\$ 148,187.00	\$ 32,813.00
Professional Services (Alternate Bid)	\$ 46,331.00	\$ 3,669.00
	\$ 1,034,969.00	\$ 196,031.00

MODIFICATION C
2011 30-INCH & OLD 22-INCH TILE
REPLACEMENTS W/ PARTIAL OPEN DITCH

CONNECT OLD ALIGNMENT TO OPEN DITCH WITH 24-INCH

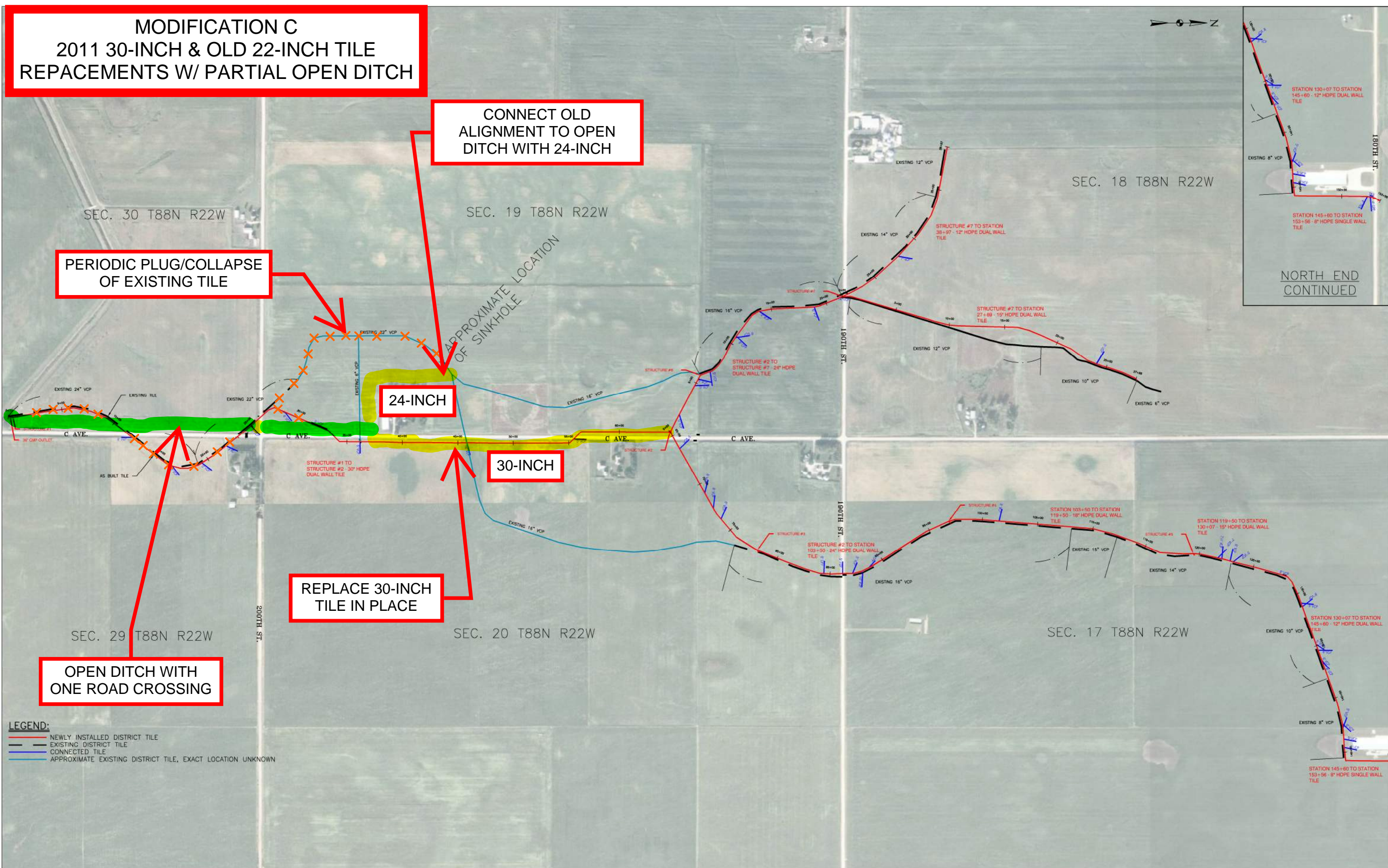
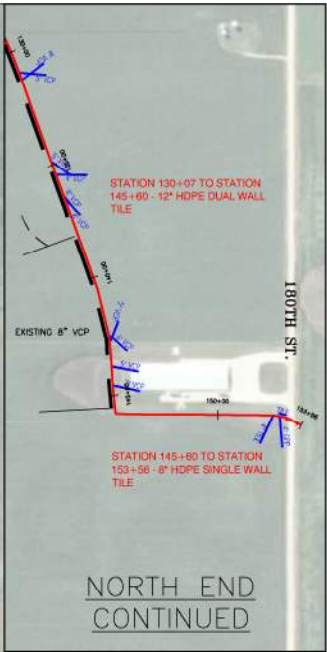
PERIODIC PLUG/COLLAPSE OF EXISTING TILE

24-INCH

30-INCH

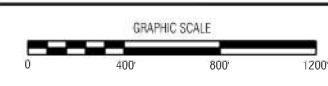
REPLACE 30-INCH TILE IN PLACE

OPEN DITCH WITH ONE ROAD CROSSING



LEGEND:

- NEWLY INSTALLED DISTRICT TILE
- EXISTING DISTRICT TILE
- CONNECTED TILE
- APPROXIMATE EXISTING DISTRICT TILE, EXACT LOCATION UNKNOWN



NO.	REVISION	BY	DATE	NO.	REVISION	BY	DATE

CGA Clipsadle-Garber Associates, Inc.
 16 East Main Street
 Marshalltown, Iowa 50158
 P: 641-792-6701
 www.cgaconsultants.com

DESIGNED: HAT DATE: ###
 DRAWN: ### DATE: ###
 CHECKED: ### DATE: ###
 APPROVED: ### DATE: ###

DRAINAGE DISTRICT 22
 HARDIN COUNTY, IOWA

IMPROVEMENT OPTIONS

PROJECT NO. 8712
 SHEET NO. 1

J:\97_2\dwg\chairs\0 019 Meeting\Improvement Options.dwg - CGA Plan - 01-22-18 - 2:31pm - HAT323

**OPINION OF PROBABLE COST
MODIFICATION C - DRAINAGE DISTRICT NO. 22**

Date: January 2017

Hardin County, Iowa



BASE BID

<u>ITEM NO.</u>	<u>DESCRIPTION</u>	<u>QUANTITY</u>	<u>UNIT COST</u>	<u>EXTENSION</u>
1	30" Ø POLYPROPYLENE TILE	2,670 LF	\$47.00	\$125,490.00
2	24" Ø POLYPROPYLENE TILE	1,140 LF	\$43.00	\$49,020.00
3	OPEN DITCH CONSTRUCTION (EST AVG 10' DEEP)	3,425 LF	\$35.00	\$119,875.00
4	30" Ø POLYPROPYLENE TILE - ROAD CROSSING	120 LF	\$100.00	\$12,000.00
5	96" Ø CMP - ROAD CROSSING	60 LF	\$475.00	\$28,500.00
6	96" Ø CMP APRON	2 EACH	\$3,000.00	\$6,000.00
7	36" Ø OUTLET	1 EACH	\$1,800.00	\$1,800.00
8	30" Ø OUTLET	1 EACH	\$1,500.00	\$1,500.00
9	CONNECTION TO EXISTING STRUCTURE	1 EACH	\$800.00	\$800.00
10	EXTENSION OF PRIVATE TILE TO NEW ALIGNMENT	8 EACH	\$4,000.00	\$32,000.00
11	PRIVATE TILE OR INTAKE CONNECTION	5 EACH	\$400.00	\$2,000.00
12	INTAKE, ROAD ROW	4 EACH	\$3,500.00	\$14,000.00
13	REMOVAL AND DISPOSAL OF SUPPLEMENTAL TILE	2,790 LF	\$7.00	\$19,530.00
14	DISCONNECT AND CRUSH SUPPLEMENTAL TILE	3,907 LF	\$10.00	\$39,070.00
15	DISCONNECT AND CRUSH MAIN TILE	4,860 LF	\$10.00	\$48,600.00
16	CLEANUP, SHAPING, AND SEEDING	1 LS	\$14,955.00	\$14,955.00
17	CCTV INSPECTION OF TILE - POST CONSTRUCTION	3,930 LF	\$2.00	\$7,860.00

Total Budgeted Construction Costs (PE PIPE): \$523,000

ALTERNATE BID PROJECT QUANTITIES

1A	30" 2000D RCP IN PLACE OF 30" POLYPROPYLENE	2,670 LF	\$18.00	\$48,060
2A	24" 2000D RCP IN PLACE OF 24" POLYPROPYLENE	1,140 LF	\$18.00	\$20,520
4A	30" 2000D RCP IN PLACE OF 30" POLYPROPYLENE	120 LF	\$18.00	\$2,160
5A	96" RCP IN PLACE OF 96" CMP	60 LF	\$425.00	\$25,500
6A	96" RCP APRON IN PLACE OF 96" CMP APRON	2 EACH	\$1,500.00	\$3,000
7A	EXTEND 30" Ø RCP AS OUTLET	1 EACH	\$0.00	\$0
8A	EXTEND 24" Ø RCP AS OUTLET	1 EACH	\$0.00	\$0
DEDUCT 17	CCTV INSPECTION OF TILE - POST CONSTRUCTION	3930 LF	-\$2.00	-\$7,860

Total Budgeted Construction Costs (RCP PIPE): \$614,380

10% +/- Contingency	\$	61,620
Land/Easement Agreements (Estimated 8 acres @ \$15K/acre)	\$	120,000
Professional Services Estimate (Base Bid)	\$	130,000
Professional Services Estimate (Additional Construction Observation for Alternate Bid - Slower Construction)	\$	23,000

TOTAL \$949,000

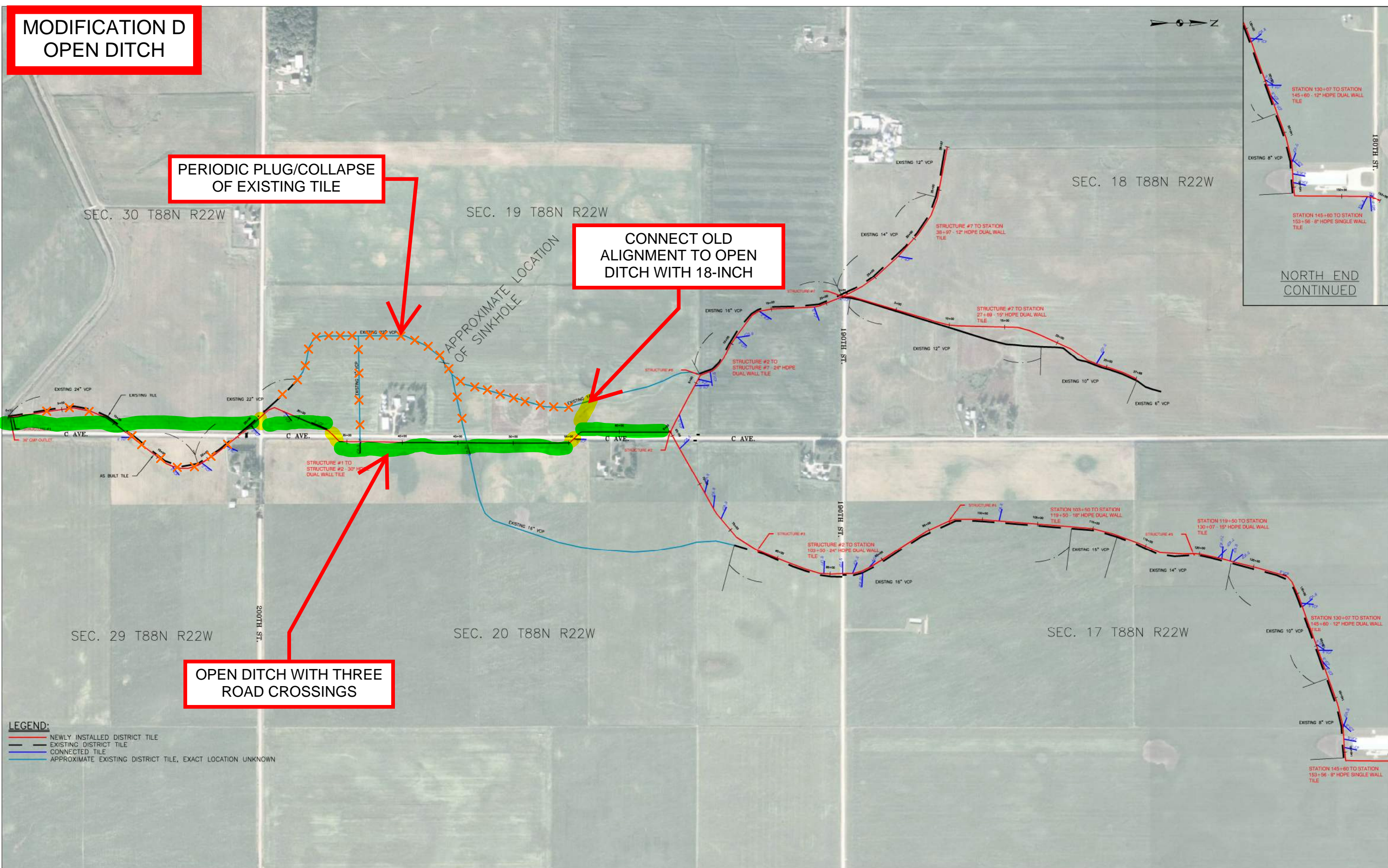
	Landowner Share	County Share
Base Bid	\$ 446,821.75	\$ 76,178.25
Alternate Bid	\$ 59,520.00	\$ 31,860.00
Contingency	\$ 50,785.25	\$ 10,834.75
Land & Easements	\$ 120,000.00	\$ -
Professional Services (Base Bid)	\$ 111,065.00	\$ 18,935.00
Professional Services (Alternate Bid)	\$ 14,981.00	\$ 8,019.00
	\$ 803,173.00	\$ 145,827.00

**MODIFICATION D
OPEN DITCH**

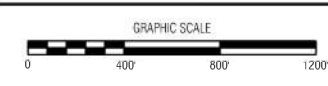
**PERIODIC PLUG/COLLAPSE
OF EXISTING TILE**

**CONNECT OLD
ALIGNMENT TO OPEN
DITCH WITH 18-INCH**

**OPEN DITCH WITH THREE
ROAD CROSSINGS**



LEGEND:
 - NEWLY INSTALLED DISTRICT TILE
 - EXISTING DISTRICT TILE
 - CONNECTED TILE
 - APPROXIMATE EXISTING DISTRICT TILE, EXACT LOCATION UNKNOWN



NO.	REVISION	BY	DATE	NO.	REVISION	BY	DATE

CGA Clippard-Garber Associates, Inc.
 16 East Main Street
 Marshalltown, Iowa 50158
 P: 641-792-6701
 www.cgaconsultants.com

DESIGNED: HAT DATE: ###
 DRAWN: ### DATE: ###
 CHECKED: ### DATE: ###
 APPROVED: ### DATE: ###

**DRAINAGE DISTRICT 22
HARDIN COUNTY, IOWA**

IMPROVEMENT OPTIONS

PROJECT NO. 8712
 SHEET NO. 1

J:\97_2\dwg\chris\10 018 Meeting\Improvement Options.dwg - CGA Plan - 01-22-18 - 2:31pm - HAT323

**OPINION OF PROBABLE COST
MODIFICATION D - DRAINAGE DISTRICT NO. 22**

Date: January 2017

Hardin County, Iowa



BASE BID

<u>ITEM NO.</u>	<u>DESCRIPTION</u>	<u>QUANTITY</u>	<u>UNIT COST</u>	<u>EXTENSION</u>
1	18" Ø POLYPROPYLENE TILE	400 LF	\$35.00	\$14,000.00
2	OPEN DITCH CONSTRUCTION (EST AVG 10.5' DEEP)	5,930 LF	\$38.00	\$225,340.00
3	96" Ø CMP - ROAD CROSSING	60 LF	\$475.00	\$28,500.00
4	96" Ø CMP APRON	2 EACH	\$3,000.00	\$6,000.00
5	72" Ø CMP - ROAD CROSSING	120 LF	\$400.00	\$48,000.00
6	72" Ø CMP APRON	4 EACH	\$2,800.00	\$11,200.00
7	30" Ø OUTLET	2 EACH	\$1,500.00	\$3,000.00
8	24" Ø OUTLET	1 EACH	\$1,200.00	\$1,200.00
9	EXTENSION OF PRIVATE TILE TO NEW ALIGNMENT	10 EACH	\$4,000.00	\$40,000.00
10	REMOVAL AND DISPOSAL OF SUPPLEMENTAL TILE	2,790 LF	\$7.00	\$19,530.00
11	DISCONNECT AND CRUSH SUPPLEMENTAL TILE	3,907 LF	\$10.00	\$39,070.00
12	DISCONNECT AND CRUSH MAIN TILE	7,060 LF	\$10.00	\$70,600.00
13	CLEANUP, SHAPING, AND SEEDING	1 LS	\$22,760.00	\$22,760.00
14	CCTV INSPECTION OF TILE - POST CONSTRUCTION	400 LF	\$2.00	\$800.00
Total Budgeted Construction Costs (PE PIPE):				\$530,000

ALTERNATE BID PROJECT QUANTITIES

1A	18" 2000D RCP IN PLACE OF 18" POLYPROPYLENE	400 LF	\$15.00	\$6,000
3A	96" RCP IN PLACE OF 96" CMP	60 LF	\$425.00	\$25,500
4A	96" RCP APRON IN PLACE OF 96" CMP APRON	2 EACH	\$1,500.00	\$3,000
5A	72" RCP IN PLACE OF 72" CMP	120 LF	\$250.00	\$30,000
6A	72" RCP APRON IN PLACE OF 72" CMP APRON	4 EACH	\$1,500.00	\$6,000
DEDUCT 14	CCTV INSPECTION OF TILE - POST CONSTRUCTION	400 LF	-\$2.00	-\$800
Total Budgeted Construction Costs (RCP PIPE):				\$599,700

10% +/- Contingency	\$	60,000
Land/Easement Agreements (Estimated 14 acres @ \$15K/acre)	\$	210,000
Professional Services Estimate (Base Bid)	\$	130,000
Professional Services Estimate (Additional Construction Observation for Alternate Bid - Slower Construction)	\$	17,300

TOTAL \$1,017,000

	Landowner Share	County Share
Base Bid	\$ 418,935.40	\$ 111,064.60
Alternate Bid	\$ 5,200.00	\$ 64,500.00
Contingency	\$ 42,435.60	\$ 17,564.40
Land & Easements	\$ 210,000.00	\$ -
Professional Services (Base Bid)	\$ 102,758.00	\$ 27,242.00
Professional Services (Alternate Bid)	\$ 1,291.00	\$ 16,009.00
	\$ 780,620.00	\$ 236,380.00

MODIFICATION E
OPEN DITCH TO SOUTH SIDE OF
200TH STREET AND OLD TILE
UPSIZED REPACEMENT

REPLACE OLD TILE IN
PLACE WITH UPSIZED TILE
TO ACCOMODATE BOTH

OPEN DITCH

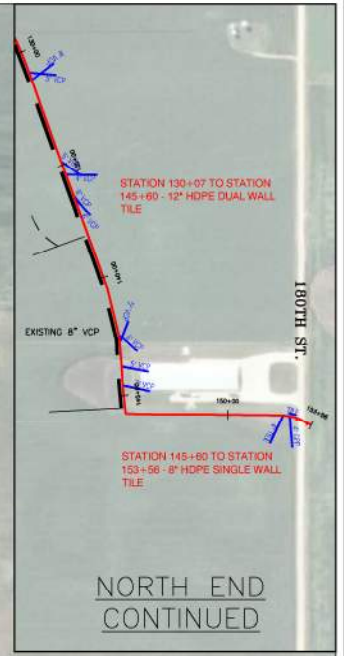
42-INCH

36-INCH

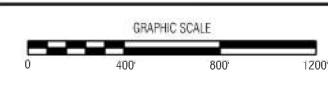
30-INCH

24-INCH

PERIODIC PLUG/COLLAPSE OF 2011
30-INCH, LATERAL CONNECTIONS TO
BE CONNECTED ACROSS TO NEW TILE



LEGEND:
 - NEWLY INSTALLED DISTRICT TILE
 - EXISTING DISTRICT TILE
 - CONNECTED TILE
 - APPROXIMATE EXISTING DISTRICT TILE, EXACT LOCATION UNKNOWN



NO.	REVISION	BY	DATE	NO.	REVISION	BY	DATE

CGA Clippard-Garber Associates, Inc.
 16 East Main Street
 Marshalltown, Iowa 50158
 P: 641-792-6701
 www.cgaconsultants.com

DESIGNED: HAT DATE: ###
 DRAWN: ### DATE: ###
 CHECKED: ### DATE: ###
 APPROVED: ### DATE: ###

DRAINAGE DISTRICT 22
 HARDIN COUNTY, IOWA

IMPROVEMENT OPTIONS

PROJECT NO. 8712
 SHEET NO. 1

J:\97_2nd\97ch\97ch10 018 Meeting\Improvement Options.dwg - CGA Plan - 01-22-18 - 2:31pm - HAT323

**OPINION OF PROBABLE COST
MODIFICATION E - DRAINAGE DISTRICT NO. 22**

Date: January 2017

Hardin County, Iowa



BASE BID

<u>ITEM NO.</u>	<u>DESCRIPTION</u>	<u>QUANTITY</u>	<u>UNIT COST</u>	<u>EXTENSION</u>
1	42" Ø POLYPROPYLENE TILE	2,380 LF	\$80.00	\$190,400.00
2	36" Ø POLYPROPYLENE TILE	1,750 LF	\$65.00	\$113,750.00
3	30" Ø POLYPROPYLENE TILE	700 LF	\$47.00	\$32,900.00
4	24" Ø POLYPROPYLENE TILE	1,400 LF	\$43.00	\$60,200.00
5	OPEN DITCH CONSTRUCTION (EST AVG 12' DEEP)	2,390 LF	\$50.00	\$119,500.00
6	48" Ø OUTLET	1 EACH	\$6,000.00	\$6,000.00
7	42" Ø POLYPROPYLENE TILE - ROAD CROSSING	70 LF	\$160.00	\$11,200.00
8	NEW JUNCTION STRUCTURES	5 EACH	\$5,000.00	\$25,000.00
9	PRIVATE TILE OR INTAKE CONNECTION	20 EACH	\$400.00	\$8,000.00
10	PRIVATE TILE LINE EXTENSIONS (EST 2,900 LF)	2,900 LF	\$18.00	\$52,200.00
11	PRIVATE TILE LINE EXTENSIONS - ROAD CROSSING (EST 250 LF)	250 LF	\$30.00	\$7,500.00
12	INTAKE, ROAD ROW	2 EACH	\$3,500.00	\$7,000.00
13	DISCONNECT AND CRUSH SUPPLEMENTAL TILE	6,697 LF	\$10.00	\$66,970.00
14	REMOVAL AND DISPOSAL OF MAIN TILE	7,200 LF	\$7.00	\$50,400.00
15	CLEANUP, SHAPING, AND SEEDING	1 LS	\$11,380.00	\$11,380.00
16	CCTV INSPECTION OF TILE - POST CONSTRUCTION	6,300 LF	\$2.00	\$12,600.00

Total Budgeted Construction Costs (PE PIPE): \$775,000

ALTERNATE BID PROJECT QUANTITIES

1A	42" 2000D RCP IN PLACE OF 42" POLYPROPYLENE	2,380 LF	\$45.00	\$107,100
2A	36" 2000D RCP IN PLACE OF 36" POLYPROPYLENE	1,750 LF	\$40.00	\$70,000
3A	30" 2000D RCP IN PLACE OF 30" POLYPROPYLENE	700 LF	\$18.00	\$12,600
4A	24" 2000D RCP IN PLACE OF 24" POLYPROPYLENE	1,400 LF	\$18.00	\$25,200
7A	42" 2000D RCP IN PLACE OF 42" POLYPROPYLENE	70 LF	\$45.00	\$3,150
DEDUCT 16	CCTV INSPECTION OF TILE - POST CONSTRUCTION	6,300 LF	-\$2.00	-\$12,600

Total Budgeted Construction Costs (RCP PIPE): \$980,450

10% +/- Contingency	\$	99,550
Land/Easement Agreements (Estimated 8 acres @ \$15K/acre)	\$	120,000
Professional Services Estimate (Base Bid)	\$	180,000
Professional Services Estimate (Additional Construction Observation for Alternate Bid - Slower Construction)	\$	70,000

TOTAL \$1,450,000

	Landowner Share		County Share	
Base Bid	\$	738,266.00	\$	36,734.00
Alternate Bid	\$	200,935.00	\$	4,515.00
Contingency	\$	95,362.00	\$	4,188.00
Land & Easements	\$	120,000.00	\$	-
Professional Services (Base Bid)	\$	171,469.00	\$	8,531.00
Professional Services (Alternate Bid)	\$	68,462.00	\$	1,538.00
	\$	1,394,494.00	\$	55,506.00

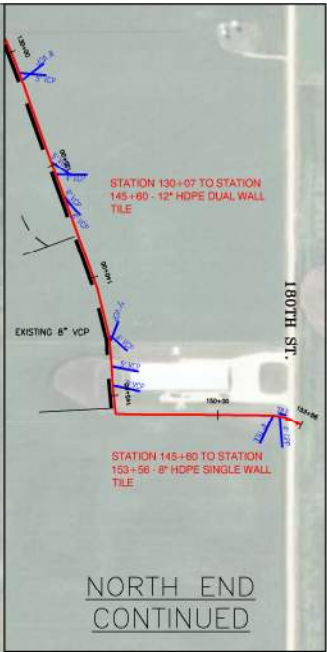
ADD ON "F"
REPLACE EAST LEG OF ORIGINAL 16" VCP MAIN TILE UP TO DISCONNECTION POINT

SURFACE DRAINAGE AREA ~ 127 ACRES

UPSTREAM SURFACE DRAINAGE AREA ~ 458 ACRES

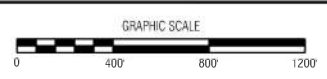
18-INCH

REPLACE OLD 16-INCH VCP TILE IN PLACE WITH 18-INCH TILE



LEGEND:
 - NEWLY INSTALLED DISTRICT TILE
 - EXISTING DISTRICT TILE
 - CONNECTED TILE
 - APPROXIMATE EXISTING DISTRICT TILE, EXACT LOCATION UNKNOWN

Note: Add On F only replaces existing 16 inch with 18 inch pipe to accommodate drainage to this segment of tile. If segment of line shown for replacement was sized to accommodate it's own drainage area plus upstream area currently being drained by other tile (total of 585 acres), it would need to be 27-inch. For pipe availability, this would likely be installed as 30-inch.



NO.	REVISION	BY	DATE	NO.	REVISION	BY	DATE



DESIGNED: HAT DATE: ###
 DRAWN: ### DATE: ###
 CHECKED: ### DATE: ###
 APPROVED: ### DATE: ###

DRAINAGE DISTRICT 22
 HARDIN COUNTY, IOWA

IMPROVEMENT OPTIONS

PROJECT NO. 8712
 SHEET NO. 1

J:\97_2nd\97ch\97ch10 1018 Meeting\Improvement Options.dwg - CGA Plan - 01-22-18 - 2:31pm - HAT323

**OPINION OF PROBABLE COST
ADD ON F - DRAINAGE DISTRICT NO. 22**

Date: January 2017

Hardin County, Iowa



BASE BID

<u>ITEM NO.</u>	<u>DESCRIPTION</u>	<u>QUANTITY</u>	<u>UNIT COST</u>	<u>EXTENSION</u>
1	18" Ø POLYPROPYLENE TILE	3,775 LF	\$27.00	\$101,925.00
2	18" Ø POLYPROPYLENE TILE - ROAD CROSSING	70 LF	\$70.00	\$4,900.00
3	PRIVATE TILE OR INTAKE CONNECTION (EST QTY)	8 EACH	\$400.00	\$3,200.00
4	INTAKE, ROAD ROW	2 EACH	\$3,500.00	\$7,000.00
5	REMOVAL AND DISPOSAL OF MAIN TILE	3,845 LF	\$7.00	\$26,915.00
6	CLEANUP, SHAPING, AND SEEDING	1 LS	\$5,370.00	\$5,370.00
7	ACCESS POINTS FOR CCTV	2 EACH	\$500.00	\$1,000.00
8	CCTV INSPECTION OF TILE - POST CONSTRUCTION	3,845 LF	\$2.00	\$7,690.00

Total Budgeted Construction Costs (PE PIPE): \$158,000

ALTERNATE BID PROJECT QUANTITIES

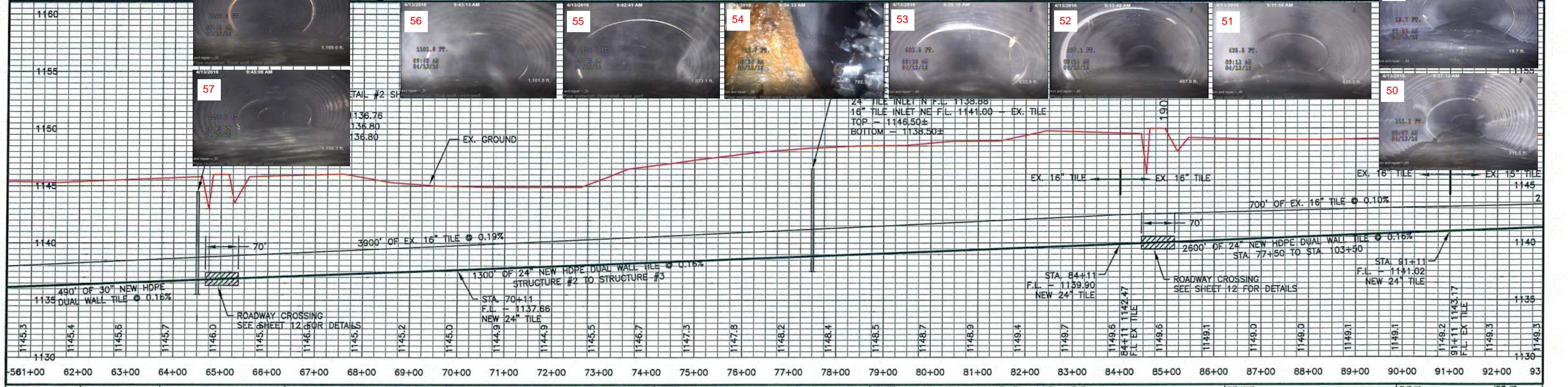
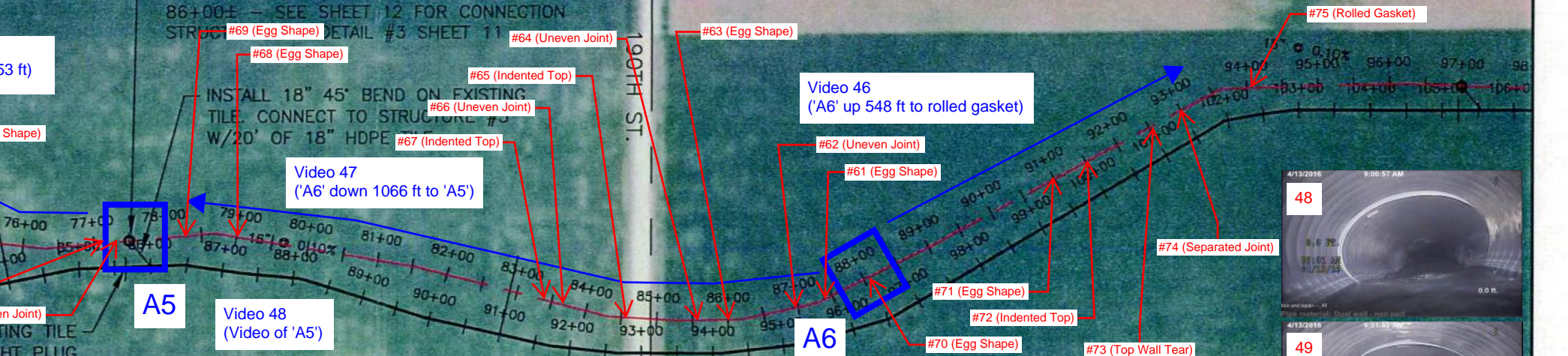
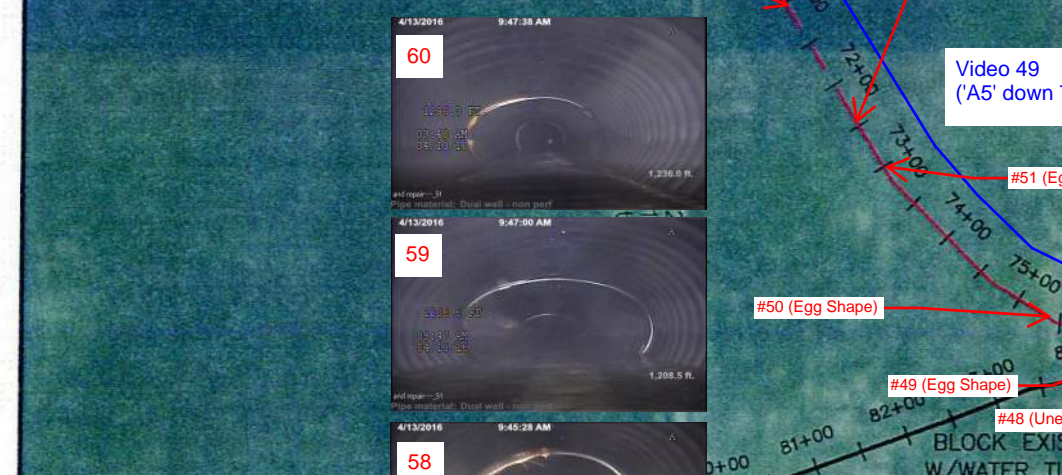
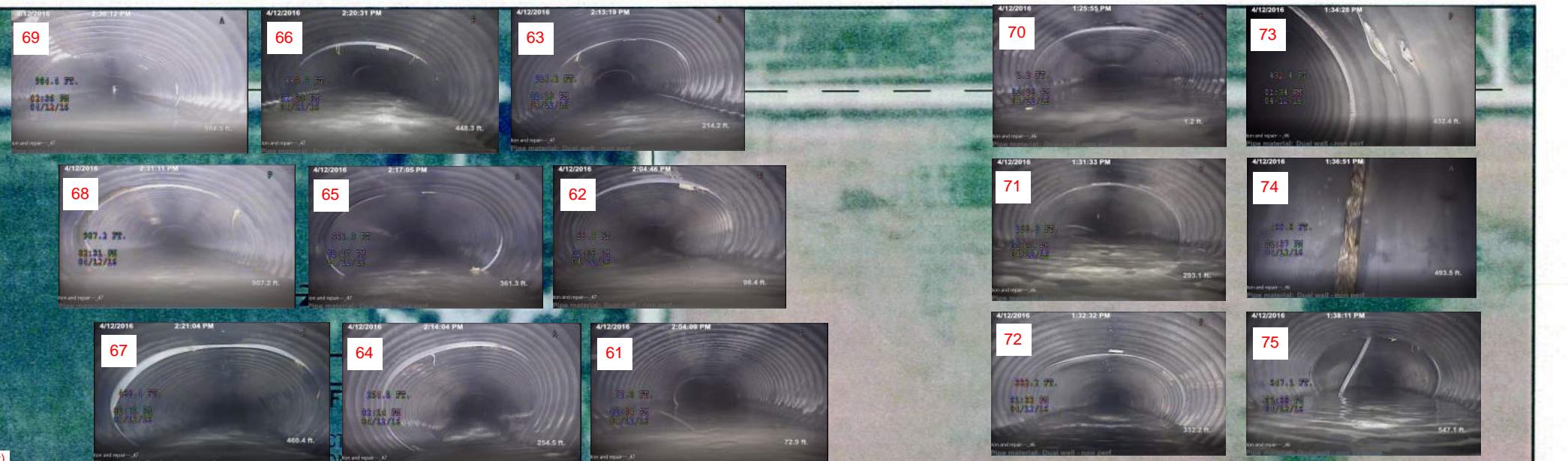
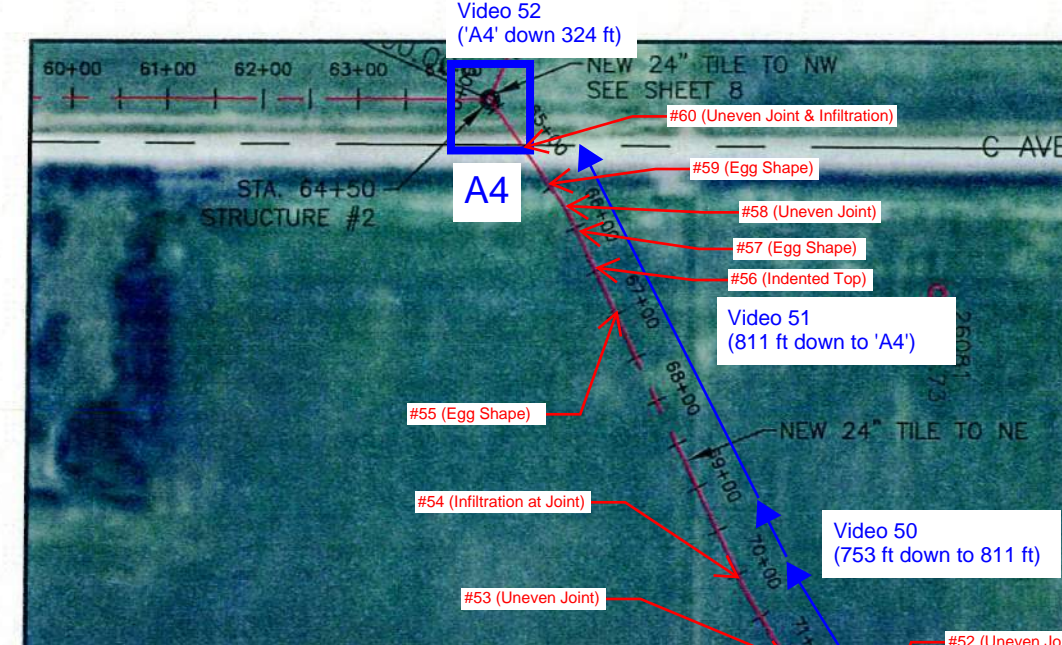
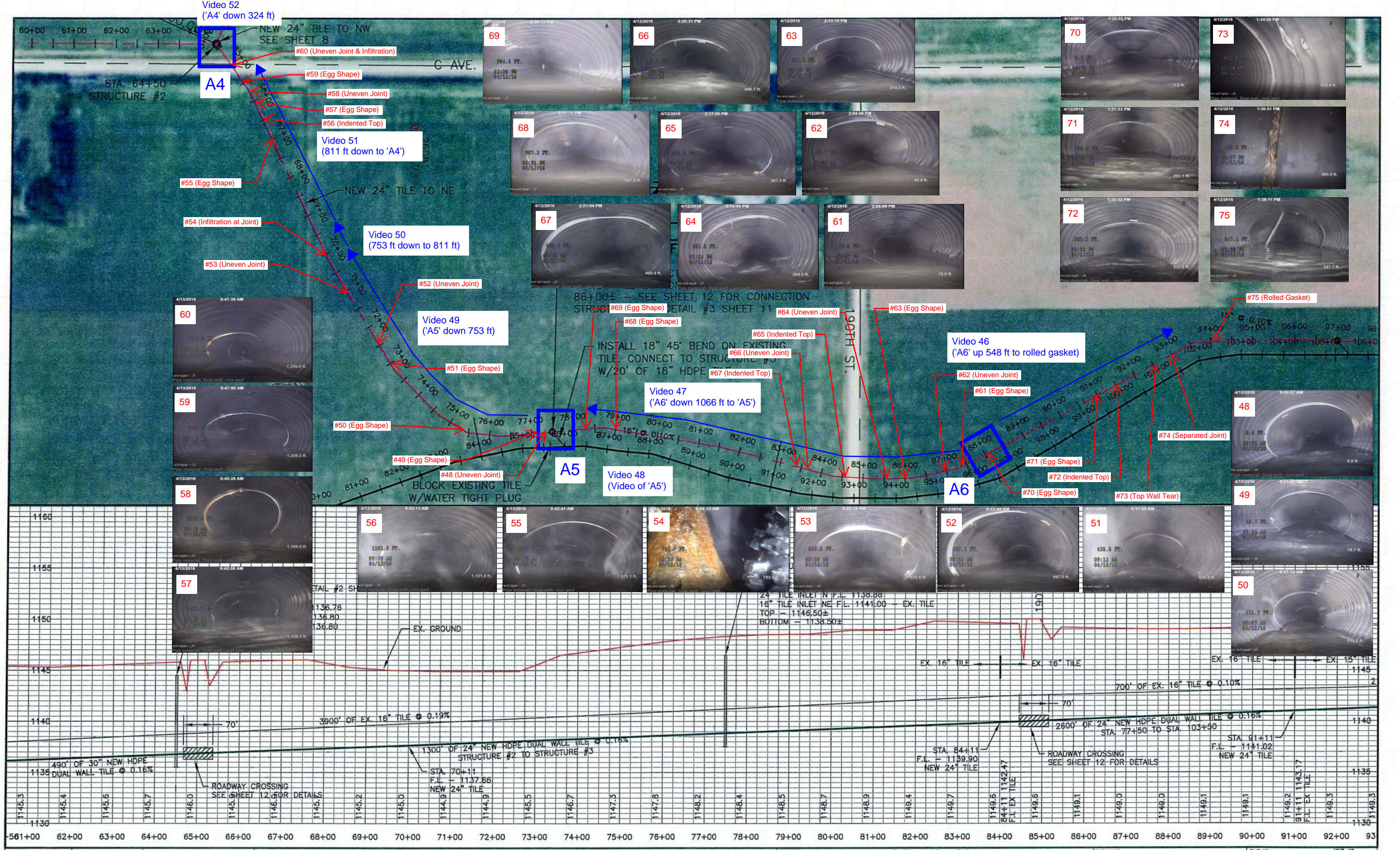
1A	18" 2000D RCP IN PLACE OF 18" POLYPROPYLENE	3,775 LF	\$9.00	\$33,975
2A	18" 2000D RCP IN PLACE OF 18" POLYPROPYLENE	70 LF	\$40.00	\$2,800
DEDUCT 7	ACCESS POINTS FOR CCTV	2 LF	-\$500.00	-\$1,000
DEDUCT 8	CCTV INSPECTION OF TILE - POST CONSTRUCTION	3,845 LF	-\$2.00	-\$7,690

Total Budgeted Construction Costs (RCP PIPE): \$186,085

10% +/- Contingency \$ 18,915
Professional Services Estimate (Base Bid) \$ 39,000
Professional Services Estimate (Additional Construction Observation for Alternate Bid - Slower Construction) \$ 8,000

TOTAL \$252,000

	Landowner Share		County Share	
Base Bid	\$	145,040.40	\$	12,959.60
Alternate Bid	\$	25,425.00	\$	2,660.00
Contingency	\$	17,328.60	\$	1,586.40
Professional Services (Base Bid)	\$	35,802.00	\$	3,198.00
Professional Services (Alternate Bid)	\$	7,243.00	\$	757.00
	\$	230,839.00	\$	21,161.00



DRAWN BY: BLY DATE: 2-9-11 FIELD NO.: P:\BOB\HARDINCO\022\DWG\F&P.DWG; 2/28/2011	APPROVED BY: G.E.S. PROJ. NO.: D.D.-22 DWG.:	REVISIONS:
---	--	------------

RE RYKEN ENGINEERING
 ACKLEY, WEBSTER CITY, & MASON CITY, IOWA

ADDRESS
 711 PARK AVENUE, ACKLEY, IOWA 50601
 PH 641-847-3273 FAX 641-847-2303

PROJECT
 D.D. NO. 22
 DRAINAGE DISTRICT IMPROVEMENTS
 HARDIN COUNTY, IOWA 2011

SHT. NAME
 PLAN & PROFILE
 MAIN TILE

PLAT NO.:
 XXXX

SHT. NO.
 5 of 12